

LEAVING LASTING IMPRESSIONS

THE PHILOSOPHY

We visualise the possibilities of every sense. From how light angles into a sunlit room and the interplay of its shadows, to how patterns transform fields. We see every element in its whole, allowing imagination to lead design.

Every texture is conceived like an individual piece of art. Every detail is appreciated by those that understand.

We know that element by element, detail by detail, a sense of place and a sense of well-being emerges. These impressions last beyond the moment.

We create spaces, environments of beauty, so carefully thought out, that they both reflect and inspire the lifestyles of the cultured that exist within.

Again and again.



LIVING BY DESIGN



“We know that element by element,
detail by detail, a sense of place and a sense
of well-being emerges.”

THE VALUES

Palme Couture was built on three guiding values. From the birth of the project to our residents' continued experience, these values are imbued in every aspect, both tangible and perceived.



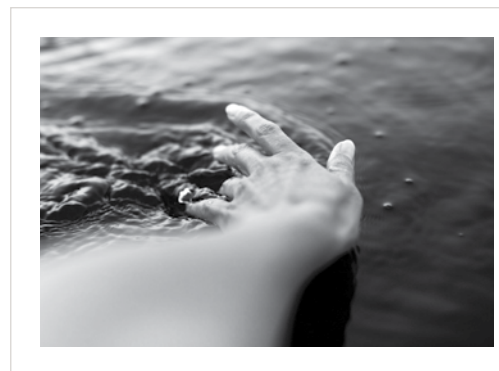
EXCEPTIONAL

We stand elevated above the conventions around us.



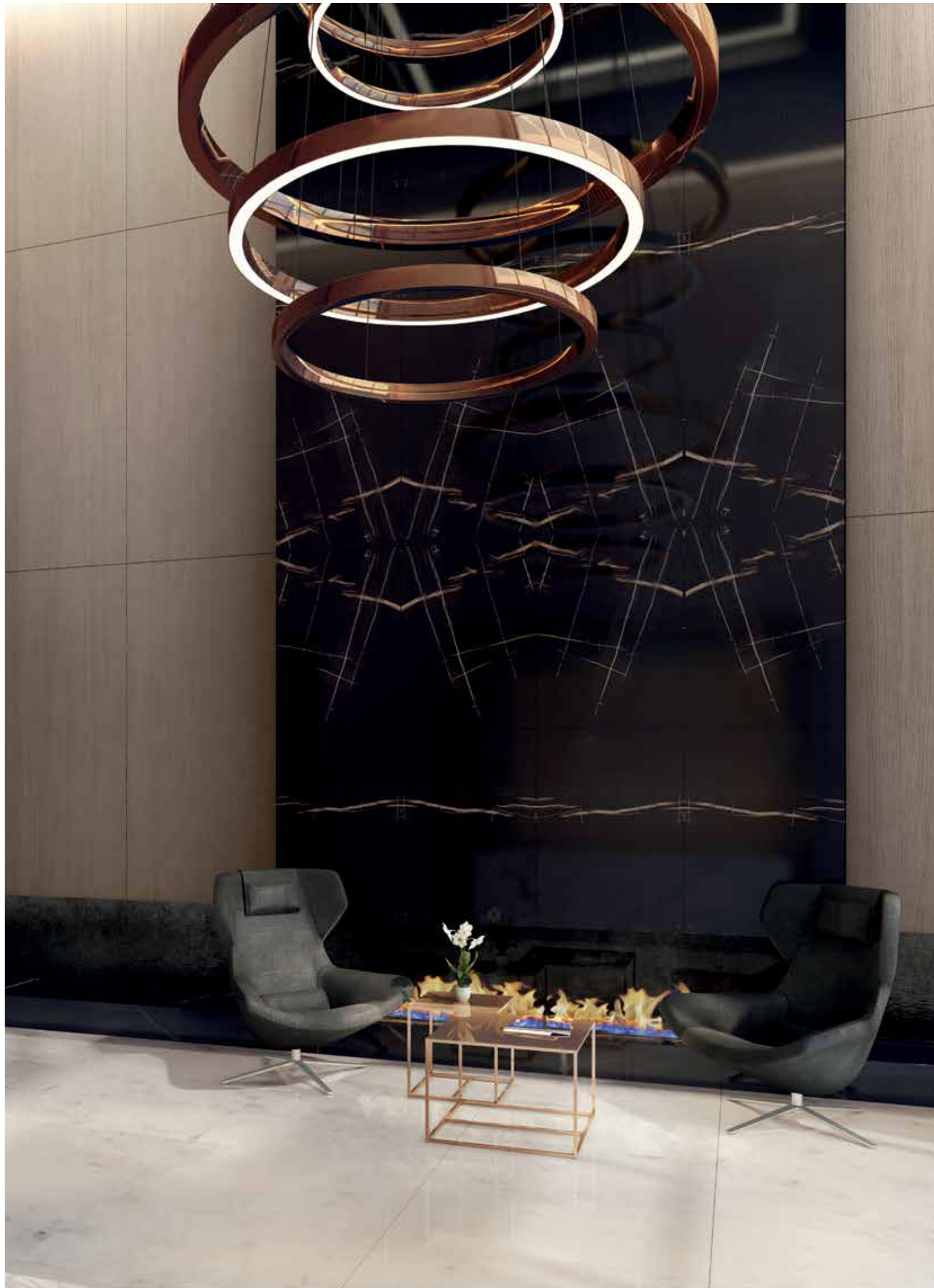
DESIGN-LED

We push creativity to the fore in both concept and detail.



INSPIRING

We ignite real emotions through stimulating experiences.



THE COLLECTION

Firmly founded on the codes of enhanced living, contemporary minimalism and clarity of detail, this exclusive collection of fourteen residential suites brings a previously unseen living concept to Dubai.

Each element was sculpted and selected to create a canvas of experience, visible in every step, in every glance, in every touch.

All homes feature enviable arrangements of light and space against a unique mix of exquisite stones.

This is expressive design that captures the vastness of the ocean and ergonomic design that does not compromise on human needs.

The background of the image is a dark, semi-transparent architectural floor plan. It features various geometric shapes, lines, and hatched areas representing walls, rooms, and structural elements. The lines are thin and light-colored, creating a complex grid-like pattern. The overall aesthetic is technical and professional.

THE DEVELOPER

INNOVATE

LIVING

THE ART OF LIVING, WELL

Enriching lives is the maxim that underpins everything we do. Innovate Living is a heart and soul brand focussing on boutique lifestyle experiences and meaningful design.

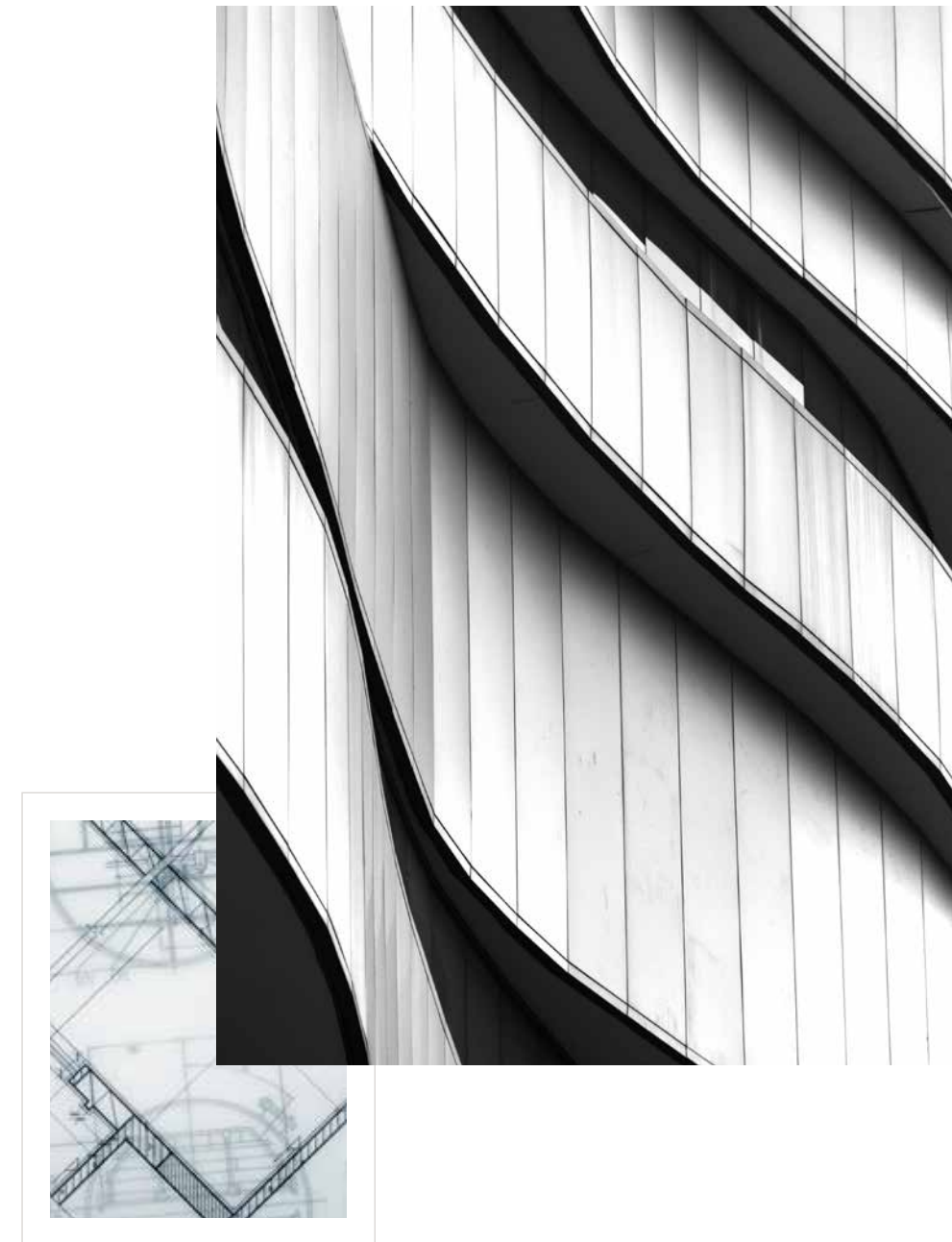
We pursue projects that matter and experiences that alter your world, always through a lens of well-being.

In a city where luxury is typically overstated, Innovate Living has become synonymous with modern minimalist developments characterised by a distinctive approach and absolute empathy with the individual.

We commit detailed research on the material mix for each project and seek to bring only original 'not-done-before' design concepts to the region. Our aim is to create more than just physical spaces but feelings, stories and lasting impressions which breathe life into each client's vision.

**Palme Couture Residences is an
Innovate Development Project.**

A LIFE ENRICHED





LOCATION



THE WORLD MEETS HERE

NEIGHBOURHOOD

Dubai stands as a platform for art, design, food and fashion; a true example of modern life weaving effortlessly with tradition. Always a place of possibility, always a place for dreamers, our city has captivated the world. With its soft colour palette and frenetic pace, yachts that slice the ocean waves and jeeps that tear through the desert dunes, Dubai is home to a glittering lifestyle.

We always look forward to the winter months when it feels like the end of a hibernation from the blistering summer. The city wakes up, and everyone smiles. We love the panoramas, the blood-orange sunsets and the sound of rustling palm trees on a lazy afternoon. The sense of optimism here is as bright as the midday sunshine and as unlimited as the architecture that scrapes the sky.



THE INSIDER'S GUIDE

NEIGHBOURHOOD



Dubai is cultivating more and more coffee drinkers – on the rise are micro-roasteries, bulletproof coffee and Kyoto cold brew. Beyond third wave coffee, the craft chocolate movement is gaining traction, with Dubai now home to the first bean-to-bar chocolatier.

We love discovering art in Al Quoz especially at The Third Line Gallery. You're sure to find interesting exhibitions showcasing contemporary pieces from the Middle East and beyond.

Dubai is a great source of gastronomy. A must visit is Levee Café and Lounge, our partner restaurant. Inspired by a collection of tastes, scents and colours from around the globe, Levee is a refreshing experience of modern Mediterranean food. The menu curation captures a sense of the seasons with fresh flavours and ingredient-led dishes.

Interior styling is an art that should express individuality. The Innovate Living Design Studio offers custom solutions that convert into signature aesthetics. Our range is virtually limitless meaning concepts can be met, according to the given architecture and space. Three key interior design trends to observe this year: brass detailing for golden glows, natural greenery to uplift and enliven and contemporary crafts that show the hand of the maker.

For discreet escapism outside of your home hire a yacht or sailboat to explore the Dubai coastline and enjoy secluded turquoise waters with stunning architectural backdrops. The sense that it's all being designed around us is astonishing.

One of the more exciting additions to the city's landscape will be Dubai Harbour, a major new waterfront destination featuring the largest marina in the region, two cruise liner terminals and the tallest lighthouse in the world standing at 135m.



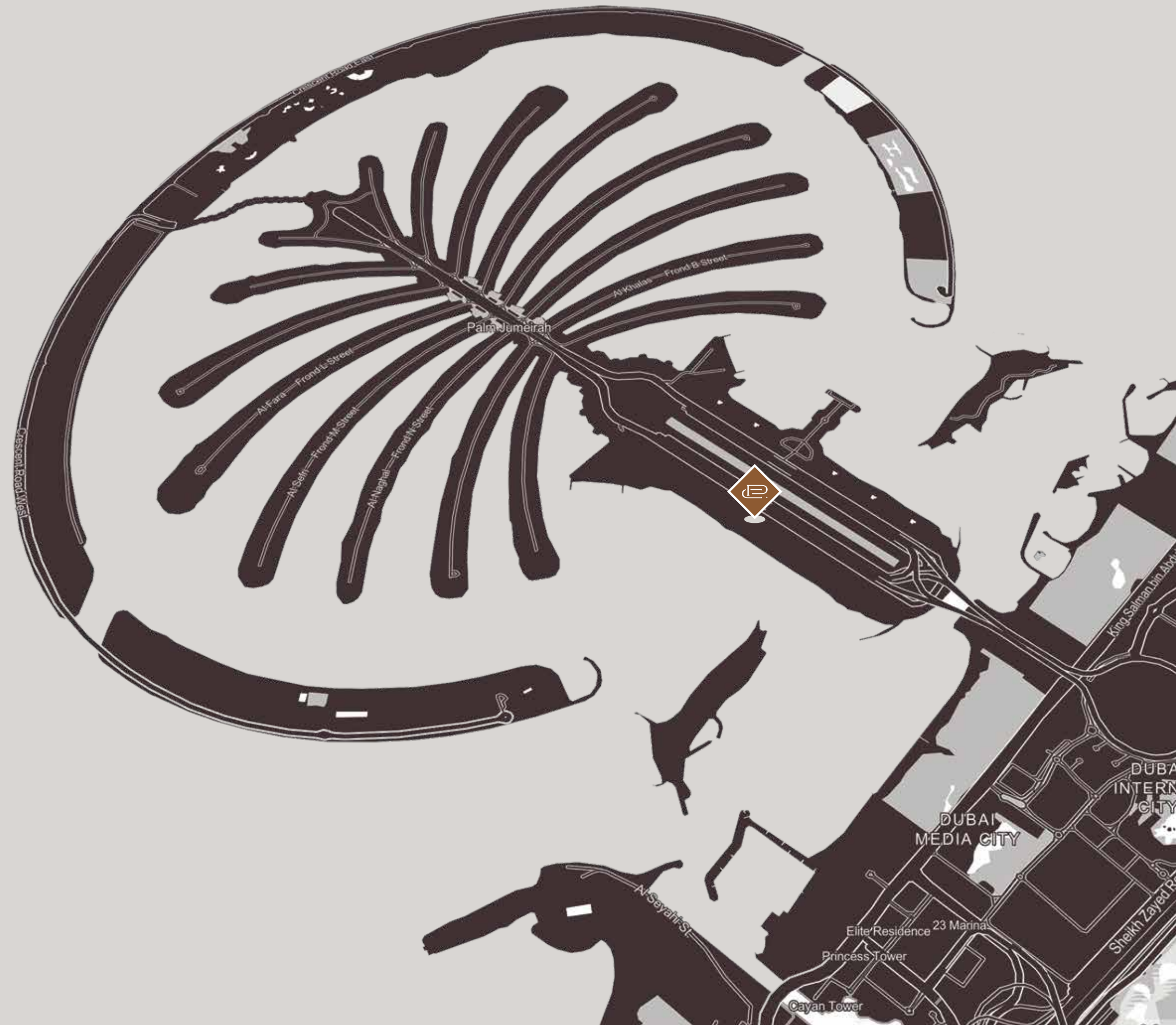
A WONDER OF THE WORLD

PALM JUMEIRAH

Palm Jumeirah is one of the most premium and iconic addresses on the planet. It is the original of Dubai's phenomenal palm islands, visible from space and adding 520km of coastline to the city.

As a home, it offers residents an exclusive environment, providing a private community, shoreline living and high-end shopping, connected to the city by road and monorail.

Palme Couture Residences are located right in the heart of the island on the long graceful trunk surrounded by the Arabian Gulf.



A modern rooftop pool area at night. The pool is illuminated with a blue light, and the surrounding deck is lit with warm, ambient lighting. There are several lounge chairs, a large tree, and a view of a city skyline in the background. The building's facade is visible on the left, featuring large glass windows and a balcony.

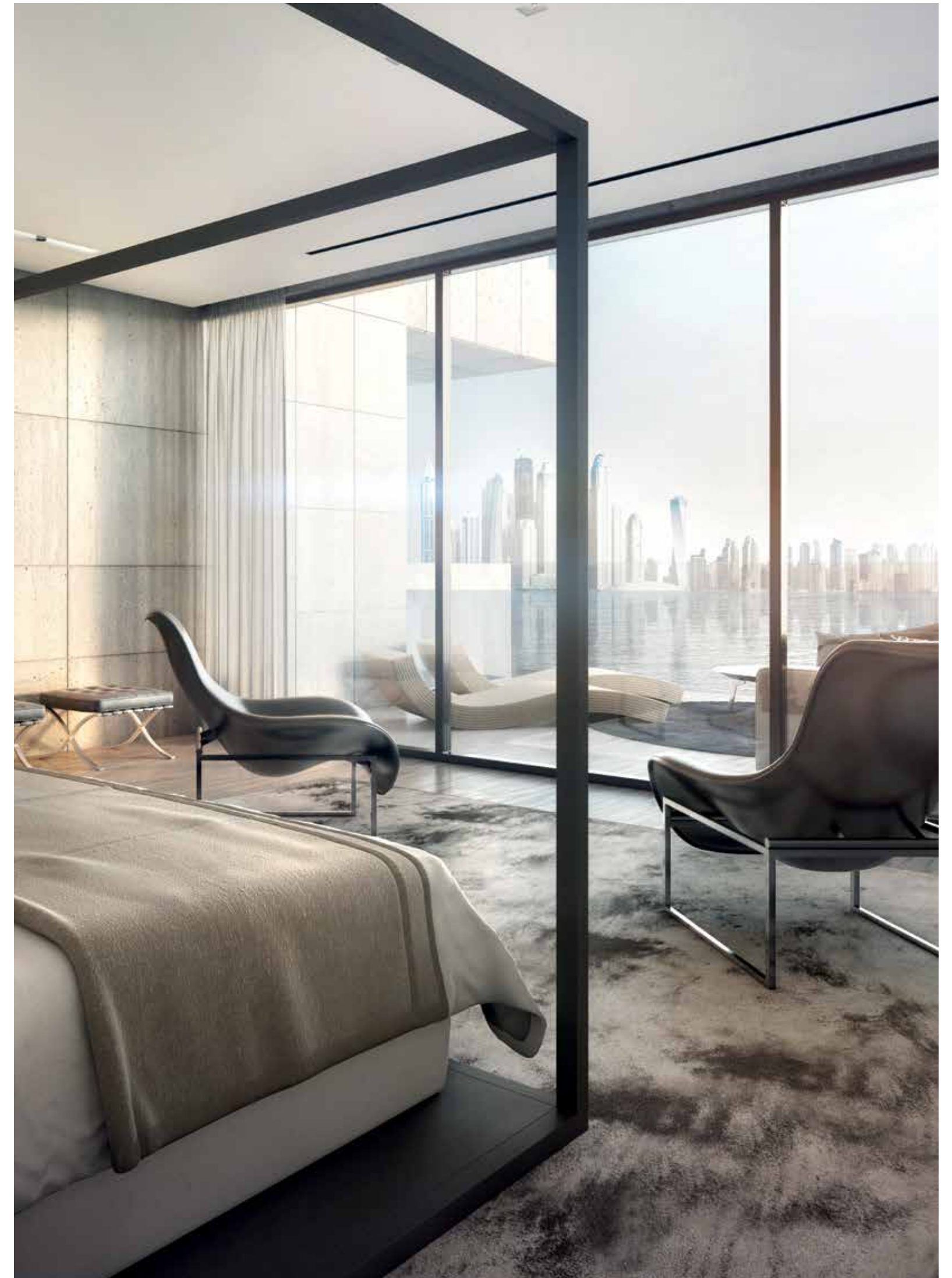
RESIDENCES

CONTEMPORARY RESIDENTIAL MASTERPIECES

Palme Couture is a collection of fourteen
couture residences including:

- ◇ Seven 3-bedroom lateral apartments
- ◇ Two 4-bedroom lateral apartments
- ◇ Two 4-bedroom townhouses with outdoor pools
- ◇ Two 5-bedroom duplexes with indoor/outdoor pools
- ◇ One Royal Penthouse with 4-bedrooms, a separate 3-bedroom guest house and rooftop pool

All suites are fully serviced with the amenities of a five-star hotel and arrive with open-air space, ample storage, two or three reserved car parking spaces and walk in closets.



MASTER BEDROOM, DUPLEX 202



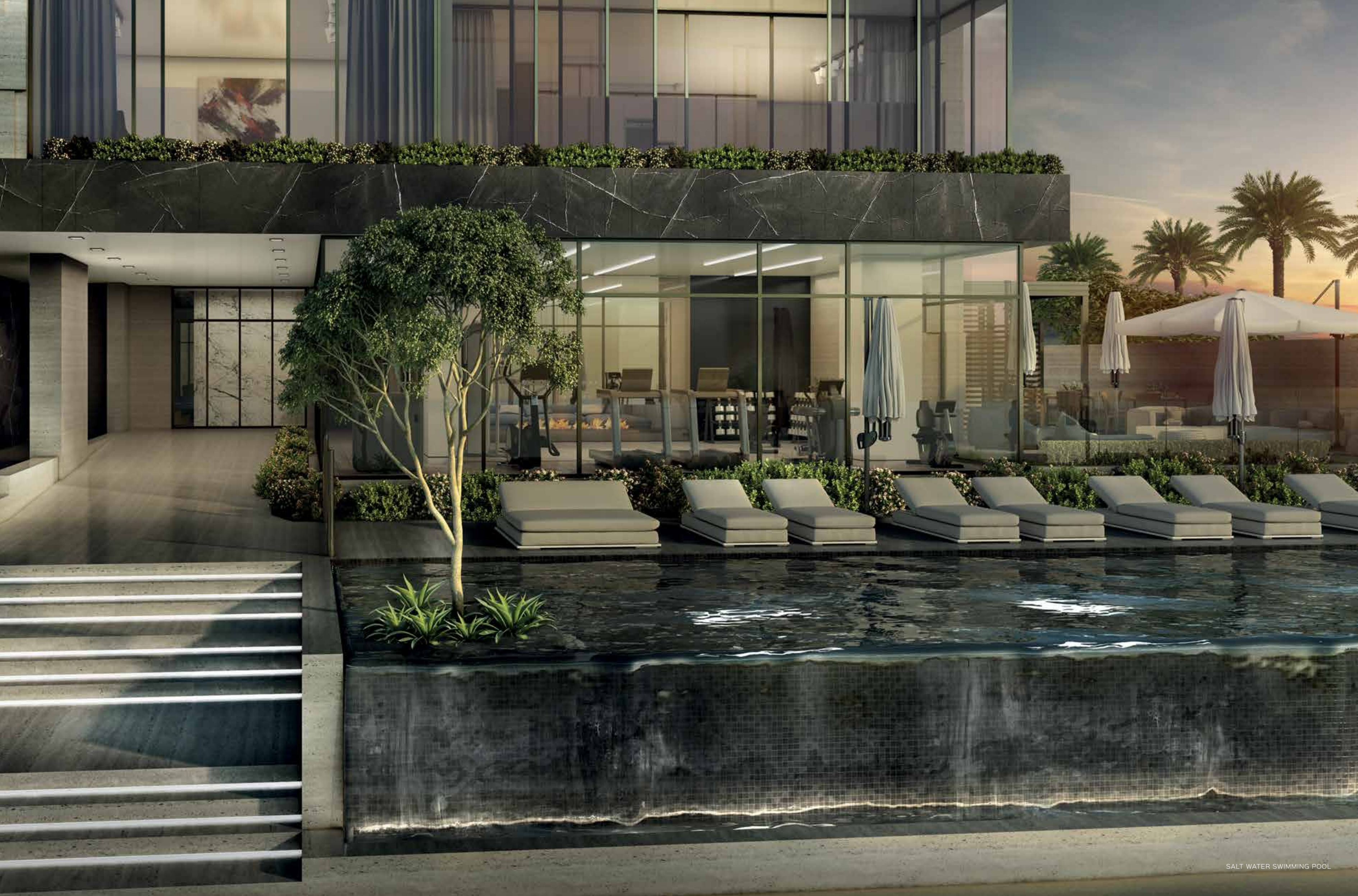
THE LANGUAGE OF LUXURY

DETAILS

Timeless Italian brands, modern bespoke pieces and a muted palette of luxurious finishes. The details sit at the heart of the Palme Couture experience.

With its elegant aesthetic, Palme Couture is an interesting combination of warmth and light. The travertine façade creates geometric forms that play with natural shadows.

Floor-to-ceiling glass doors glide and fold back fully to expose interiors to the outdoors, creating a closeness to nature and blurring the boundaries between inside and outside. They offer dramatic views as well as incredible light on every floor all day long.

































KITCHENS

SPECIFICATIONS



State-of-the-art kitchens are featured in all homes. Cabinets by Poliform-Varenna are finished in sleek black and white gloss finishes with seamless black groove handles. The purest white stone flooring adds visual space and ambient depth as it wraps the kitchen island and creates a continuous flow into the living room.

BATHROOMS

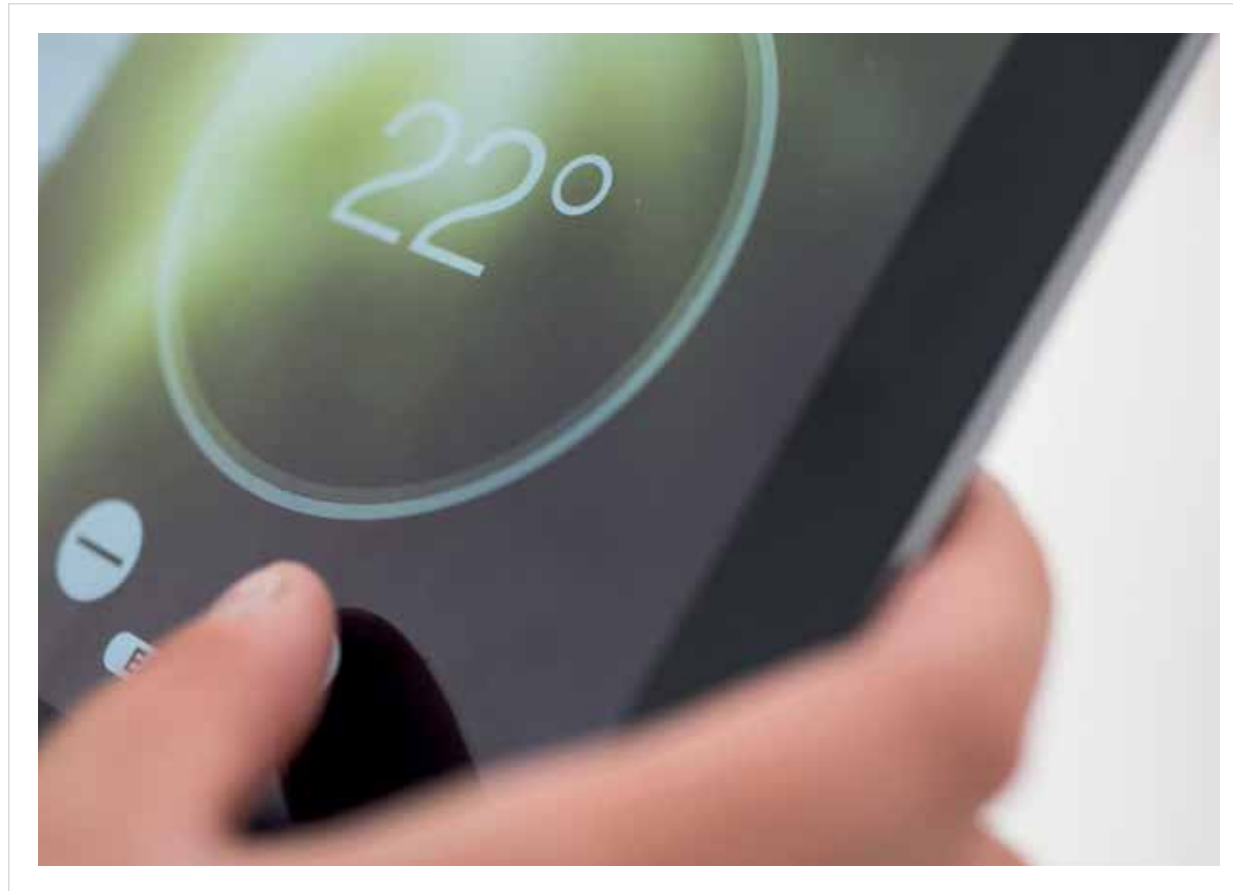
SPECIFICATIONS



The bathrooms are inspired by our waterside location. Marble surfaces of natural grey and blue patterning are reminiscent of ocean waves in a storm. Sleek, suspended vanity units finished in black and white gloss lacquer suggest a shell-like pearlescence. Marble countertops with integrated basins imitate a natural spring set in stone, whilst chrome vanity and shower fixtures by Gessi bring a contemporary edge.

HOME TECHNOLOGY

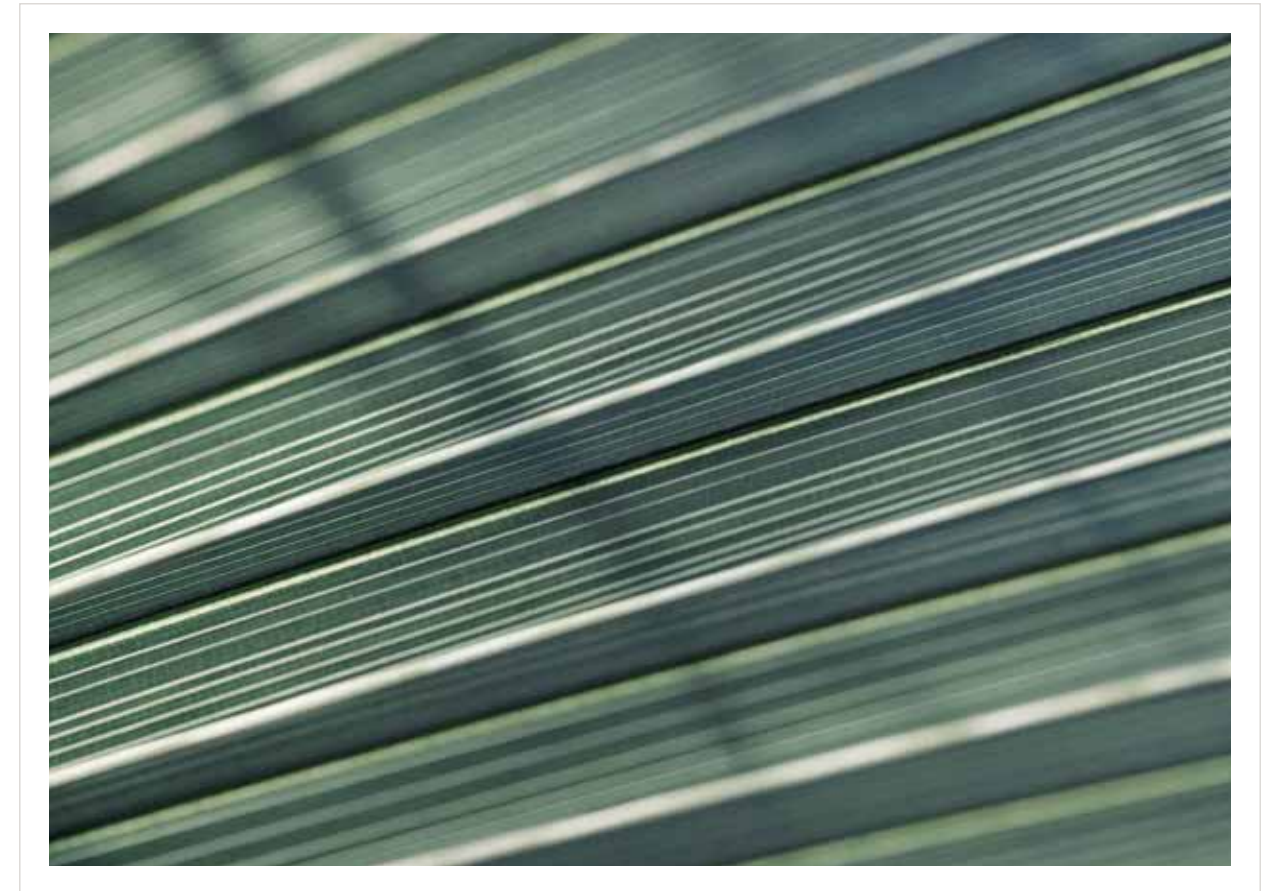
SPECIFICATIONS



Technology is the silent assistant throughout Palme Couture. For the convenience of residents, we have integrated fully optimised smart home systems by Crestron, featuring keypad controlled home automation functions. And to uphold the aesthetic integrity of the interiors, all visible units are stylishly designed and seamlessly incorporated.

LANDSCAPING

SPECIFICATIONS



With a pristine sandy beach and the turquoise ocean as our setting, all landscaping is designed to be empathetic with our bountiful natural assets. The considered planting of mature trees and our Japanese sky gardens soften the connection between the built and coastal environments.

BEACHFRONT LIVING

FEATURES



As well as enjoying sweeping views from their ocean-facing home, residents benefit from private beach access and unlimited use of our beachfront amenities. Bathe in pure luxury in our black-tiled, salt water infinity pool, or relax in beautiful outdoor cabanas at our beach club and juice bar.

GYM

FEATURES



To reach optimum fitness inspired by breath-taking sea views, residents may make use of our ocean-facing gym, fully furnished with state-of-the-art equipment by TechnoGym. And, for those with a specific fitness mission, our in-house personal trainer will provide the necessary expertise and motivation.

SPA

FEATURES



The residents' spa is a haven of health and self-focus, comprising a massage room and thermal area with a relaxation room, sauna and Jacuzzi. Created entirely from white stone and featuring dark grey reveals and low light levels, this temple of wellness inspires a luxuriously calming mood of 'dark luxury'.

CIGAR LOUNGE

FEATURES



This intimate space is created as a cocoon to embrace residents before and after a spa treatment or gym session. It is a restful spot in which to relax, contemplate, enjoy a cigar or watch a movie. The room is purposefully subdued in colour, peaceful in mood and rich in texture. Making a dramatic statement in burnished black metal, the suspended fireplace screen perfectly complements the natural timber floor in soft grey.

THE LOBBY

FEATURES



This voluminous double-height space, with its oversized chandelier by Viabizzuno and curated art provides a fitting sense of arrival. Warm wood panelling, marble flooring and a real fireplace evoke a timeless mood of genuine hospitality. It is here, our concierge welcomes residents and visitors, ensuring all moments at Palme Couture are enhanced by gracious attention.

PERSONAL SERVICES

FEATURES



Residents of Palme Couture will appreciate the effect of thoughtful design in terms of the support they receive as well as in the aesthetic that surrounds them. Articulated in the form of a 24/7 concierge, in-house beauty salon, valet parking and chauffeur transfers, service is pre-emptive and personalised.



MASSIMO LISOTTI
Senior Architectural Designer
Innovate Living Design Studio

A CONVERSATION WITH MASSIMO LISOTTI

INSPIRATION

Envisioned by Innovate Living architect Massimo Lisotti, the Los Angeles-style residences of Palme Couture stand as an archetype of experience-enriching design. Free-flowing connections and uninterrupted movement from inside to out evoke feelings of creativity and serenity.

Vast expanses of glass allow abundant daylight to flood each room. The concept fundamentals were always simplicity, modernity and minimalism against an array of texture and a pursuit of comfort.



CAN YOU GIVE US AN INSIGHT INTO YOUR BACKGROUND?

I bring nine years' experience from Los Angeles, working across both commercial and residential projects in Beverly Hills and Hollywood Hills alongside celebrity clients, top real estate developers and award-winning architects. Following that, I moved to Central London where I spent another three years with a boutique design and build studio working on modern luxury residential projects. The lure of L.A. pulled me back though and I returned there just before my most recent transition to Dubai – the land of luxury architecture.

HOW DO YOU INTEGRATE FURNITURE COMPOSITION INTO YOUR LAYOUTS?

I also work as a furniture designer and so this forms a critical part of my work. I recreated the entire interior furniture line from Rudolph Schindler's early masterpiece – the James Eads How House in Silver Lake. One of the most important surviving modernist houses in Los Angeles. This project has really shaped my entire

“When I first started working on this project I imagined a Hollywood Hills home brought to a Dubai coastline.”

approach to design. All of the furniture was developed in rosewood and burgundy leather. Now, whenever I take on a new project I use inspiration from Schindler Modernism.

CAN YOU EXPLAIN YOUR CONCEPTUAL VISION FOR PALME COUTURE?

When I first started working on this project two years ago, I imagined a Hollywood Hills home brought to a Dubai coastline. The space I wanted to capture was an urban loft-like environment nestled against the vastness of the ocean. The aim was to keep the concept free from visual noise, creating spaces where residents can connect and switch off. Each home holds a consistency of character: open space, clean lines and maximised glazing to highlight the view. In some rooms, it actually feels like you are suspended above the turquoise mass beneath.

WHERE DO YOU SOURCE INSPIRATION?

Richard Neutra, Schindler and Richard Meyer are always the starting point – I'm continually inspired by their architecture. My own philosophy has been shaped through a reinterpretation of their modernist styles alongside mid-century Southern Californian design cues, specifically from the Hollywood Hills homes in L.A.



WHAT ARE THE SIGNATURE DETAILS WITHIN PALME COUTURE?

Clean lines, white open spaces, simplicity, indoor/outdoor as a unique all-in-one space, unornamented façades and seamless surfaces of luxury marble used as artworks and masterpieces of design.

CAN YOU TELL US ABOUT THE KEY MATERIALS AND PIECES YOU'VE SPECIFIED FOR THIS PROJECT?

We've imported 15 types of marble from the Carrara marble quarries in Italy. One of the most striking features of the scheme is the dark grey 'Bardiglio Nuvolato' marble fireplaces, a detail that sits in stark contrast to the bright white Volakas marble canvas extending from the corridors to the outside terraces. We have also partnered with top Italian brands like Rimadesio, Poliform, Minotti for furniture and Viabizzuno for lighting. This project has been very much about assembling something quite edgy to match the lifestyle of the modern high achiever here in Dubai.

EXPLAIN YOUR DESIGN PROCESS

I always start with thorough interviewing of my client to get under the skin of their lifestyle and convey my design vision with 3D sketches and images. I then inspect the site down to the bone. My vision is crystal clear before moving into the design development stage and structural and MEP coordination. Materials and interior furnishings are carefully procured as they represent the transition from exterior architecture shapes and forms through to the interior. I'm particularly focused on sustainable design by incorporating new energy efficient revolutionary technology such as geothermal heating and cooling systems, solar panels, energy saving glazing and solid wall insulations.

WHAT IS YOUR FAVOURITE DECORATIVE PIECE?

All forms of abstract sculpture, especially anything by David Shapiro.

WHAT IS YOUR BEST PIECE OF DESIGN ADVICE?

Integrate modern furniture design with classics from Mies van der Rohe or Le Corbusier.

A NATURALLY REFINED PALETTE

MATERIALS

When we seek distinctive interiors that resonate with the soul, we entrust nature with our creativity. The beauty of muted colours, natural stones and warm timbers inspired the scheme. Following a rigorous selection process and a proven list of suppliers we opted for the finest Carrara marble, travertine, oak and iroko and complemented them with burnished bronze metal, gloss lacquer and black glass.



Grey Marquina



Volakas Super Extra Honed



Travertine Stone



Sahara Noir

WALL FINISHES

- Iroko Stained Grey
- Grey Oak Strip Panels
- Light Oak Strip Panels
- Black Marquina Marble
- Dark Bronze Metal
- Black Metal
- Fior di Bosco Grey Marble
- Light Bardiglio (Bathrooms)
- Dark/Blue Bardiglio (Fireplaces)
- Volakas Extra (Kitchen/ Backsplash/Island)
- Statuarietto
- Sahara Noir
- Light Beige Timber
- Grey Oak Panels
- Light Oak Panels
- Travertine Stone
- White Lasa Marble
- Black Glass
- Grey Marquina
- Crema Delicato Marble

FLOOR FINISHES

- Volakas Super Extra Honed
- Light Grey Oak Timber
- Dark Grey Oak Timber
- Fior Di Bosco Grey Marble
- Bardiglio Light
- Statuarietto Marble
- Lasa White Marble
- Bianco Venus

COUNTERTOP FINISHES

- Volakas Extra
- Fior di Bosco Grey Marble
- Light Bardiglio
- White Lasa Marble
- Statuarietto Marble

MILLWORK / JOINERY

- White/Black Glossy Lacquer
- Light Timber Oak Doors
- White Matt Lacquer Doors
- Thermo Treated Brown Oak
- Black Oak
- Dark Grey Oak

CREDITS

Lighting by **VIABIZZUNO**

Kitchens and Bedroom Closets by **VARENNA (POLIFORM)**

Furniture by **MINOTTI**

Master Closets and Interior Doors by **RIMADESIO**

Outdoor Furniture by **PAOLA LENTI**

Gym Equipment by **TECHNOGYM**

Bath Amenities by **HERMÈS**

Swimming Pool by **ABSOLUTE POOLS**

Smart Home by **CRESTRON**

Glazing by **VITROCSA**

Bio Ethanol Fire Places by **GLAMMIFIRE**

Interior Design and Customised Furniture by **INNOVATE LIVING**

Project Development and Architecture by **INNOVATE LIVING**

INNOVATE
LIVING

DISCLAIMER: **Palme Couture Residences is an Innovate Development Project.** The information and data contained in this brochure has been prepared by Innovate Living Management LLC ("Innovate Living") solely as a guide and does not constitute advice or any agreement. The unit layouts, specifications, furniture, artists' renderings, amenities and other information described and depicted in this brochure are for illustrative purposes only and no representation or warranty (express or indirect) is made as to the accuracy of any statements, layouts, diagrams or other information contained in this brochure. Innovate Living reserves the right to change the contents of this brochure without notice at any time including but not limited to plans, layouts, diagrams, schematics and finishings of any part of the **Palme Couture** development. The contents of this brochure including the collection, arrangement and assembly of text, data, graphics, images, logos and all copyright, patent, trademark, data and other intellectual property rights herein are owned by Innovate Living. The information contained in this brochure is confidential and is for the exclusive use of the recipient. Any use of the content of this material or proprietary content including the reproduction, modification, distribution, transmission, republication or display of the contents in whole or in part is strictly prohibited without the express written consent of Innovate Living.

Project Name: **Palme Couture RERA Project Registration Number:** 1529 **Anticipated Completion Date:** 31st December 2017
Escrow Account: 001-582-0613644-01 **Bank:** Dubai Islamic Bank **Developer Number:** 1175

LIVING BY DESIGN

24/7 Sales Contact No.

+971 4 248 3445

For More Details Visit

<http://palme-couture-residences.goldpillars.ae>