

***DAMAC  
HILLS***

**THE PARK**  
**VILLAS**



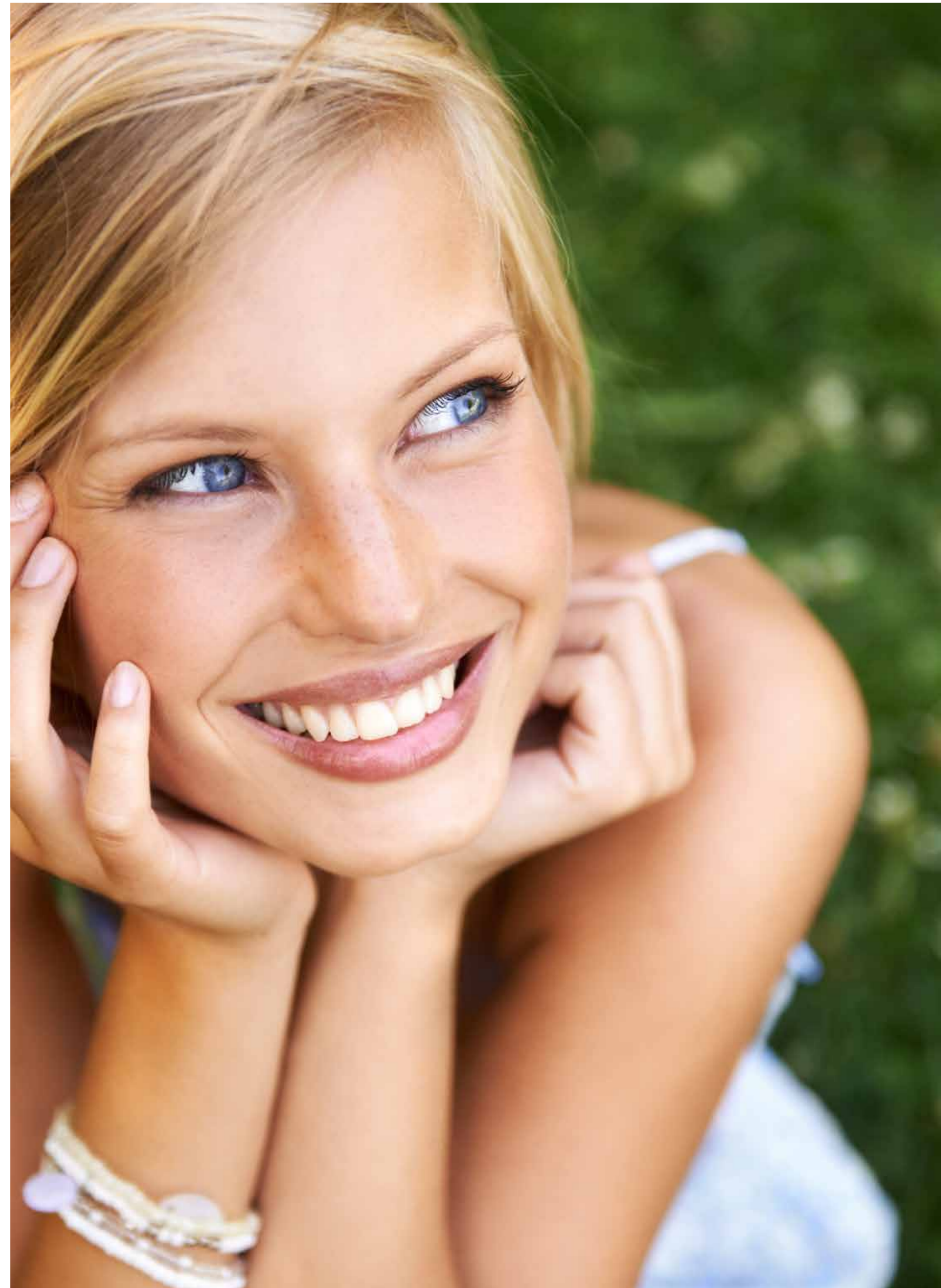
Welcome to

**THE PARK**  
**VILLAS**

Live the  
good life in  
DAMAC Hills

---

Fendi Casa, Trump and  
Paramount Hotels & Resorts,  
world-renowned brands,  
bring their coveted vision of the  
gold standard in luxury living  
to DAMAC Hills



Appreciate the finer things in life at the impressive DAMAC Hills community

---



This is where opulent lifestyles, world-class retail and leisure spaces, along with spectacular outdoor living, spring to life across 42 million square feet in one of Dubai's most prestigious master developments.

Mansions, villas, apartments and branded residences in association with celebrated names all have access to world-class retail and leisure spaces, along with spectacular outdoor areas and rich greenery in the form of the Trump International Golf Club Dubai and The Park.





World-class  
leisure facilities



A championship-  
standard  
golf course



## Home is where the park is

---

The Park Villas boast  
nearly four million  
square feet of parkland  
as their back yard



Introducing  
The Park Villas  
at DAMAC Hills

Presenting a collection of striking homes nestled within the breathtaking acres of The Park at DAMAC Hills, a sanctuary of tranquility and luxury.

Here trees, pathways, streams and water features allow plenty of space to enjoy the great outdoors.

At The Park Villas, you'll discover homes where you can truly nurture your mind, body and soul.



There's  
something for  
everyone



**NEARLY FOUR  
MILLION  
SQARE FEET  
OF PARKLAND**

**Main Themes**

- 1 — Skate Park
- 2 — Fitness Park
- 3 — Palm Park
- 4 — Pearl Park
- 5 — Play Park
- 6 — Events Park
- 7 — Pond Park
- 8 — Beach Park
- 9 — Recreational Park

**Sports Facilities**

- 1 — Football pitch
- 2 — Tennis court
- 3 — Basketball court
- 4 — Cricket practice nets
- 5 — Beach volleyball court
- 6 — 5-Hole practice golf

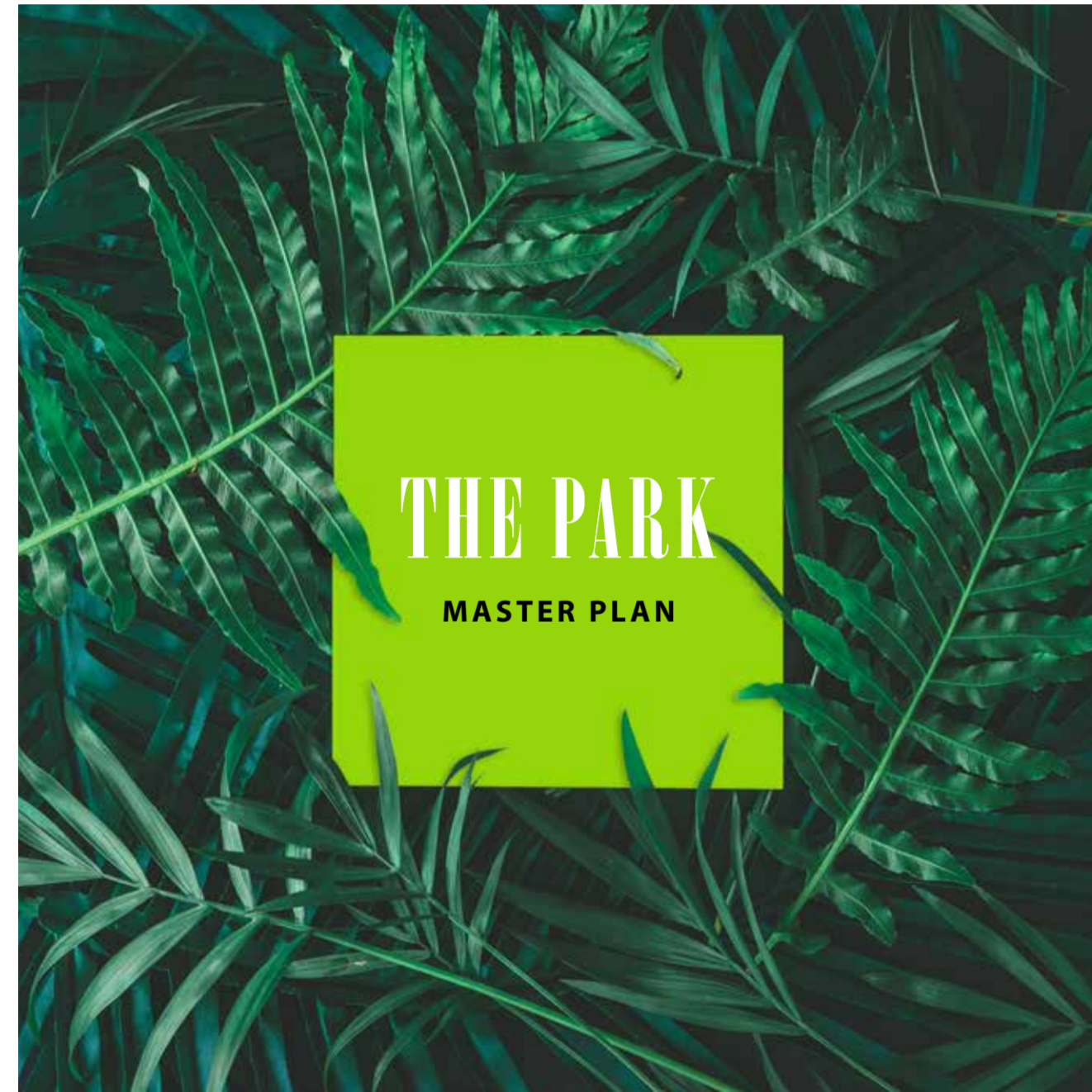
**Entertainment**

- 1 — Life-size chess
- 2 — Picnic & BBQ area
- 3 — Splash pad
- 4 — Children's play area

**Facilities**

- Picnic Park
- Restaurant/Food Kiosk
- Toilets
- Parking

**THE PARK**  
**AT DAMAC HILLS**





Where life is a  
walk in the park

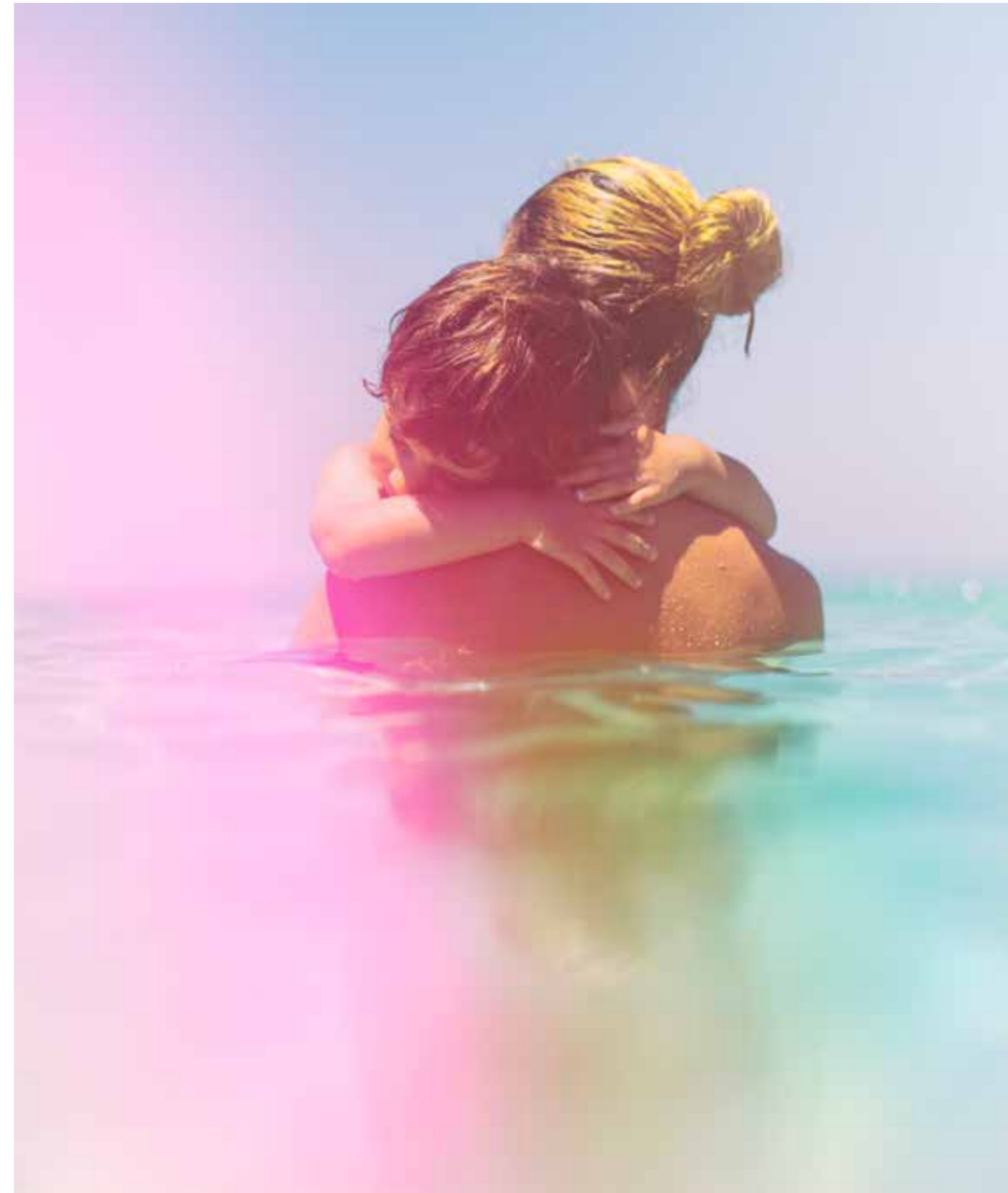


A serene  
community  
atmosphere



# The Beach Park

Feel the soft sand between your toes, soak your feet in the cool water and unwind at the beach-inspired park. Watch the sun set behind blue waters and experience joy at the ultimate beach escape close to home.



Where life is good by the beach



# The Pond Park

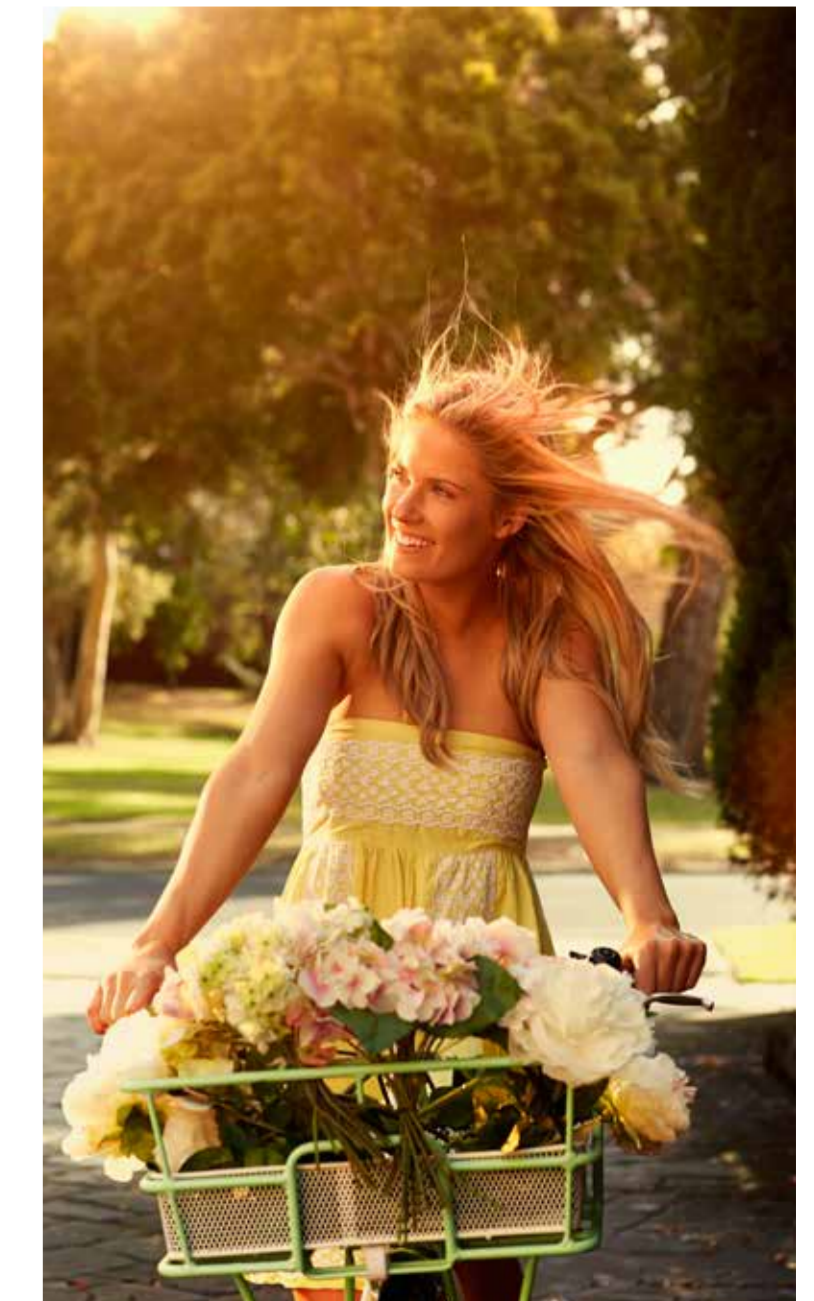
Discover an oasis of calm set around the restful waters of the large pond, where you can take time to let go, relax and rejuvenate.

Leave the stresses of the city behind you as you unwind to the sound of gently lapping water and birdsong.

Where life is a sanctuary of tranquility



Walk along winding pathways creating unforgettable memories



# The Play Park

It's the perfect place to enjoy some fun family time, where you can explore the great outdoors, relish quality time in the spacious play area, and cherish every moment with your loved ones.



Where life is perfect with your family



# The Skate Park

Explore the buzzing skate park and try your hand at mastering the exciting sport. Featuring multiple ramps, here you can count on experiencing extreme speed and hours of thrills.



Uniquely designed to challenge your abilities

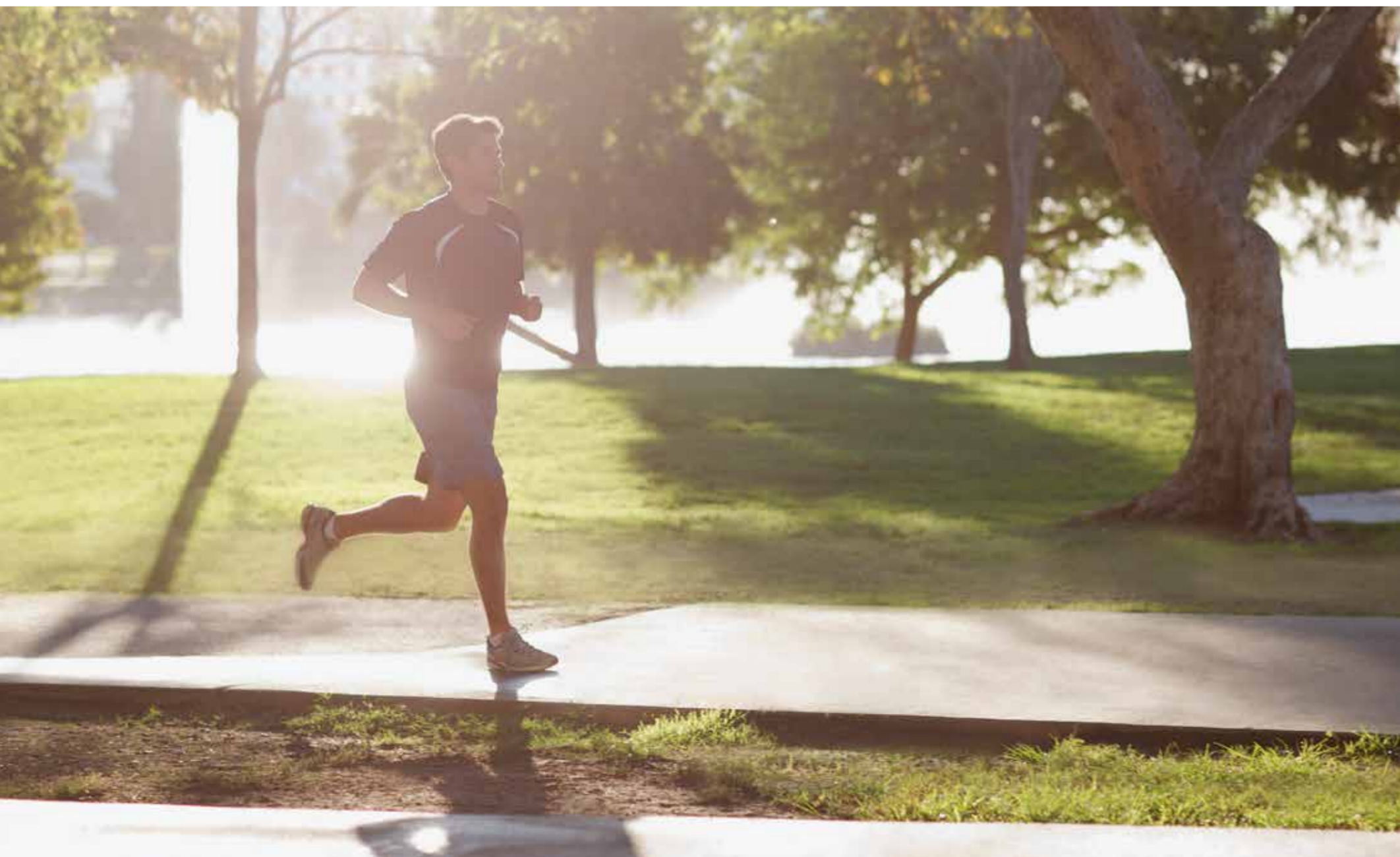


Where life is about living on the edge



# The Fitness Park

Discover your inner athlete and enjoy outdoor facilities that appeal to every age and interest, including a jogging track, world-class basketball and tennis courts, football and cricket pitches, and al fresco gym equipment to let off steam with some exercise.



Where life is an adventure at every corner



# The Events Park

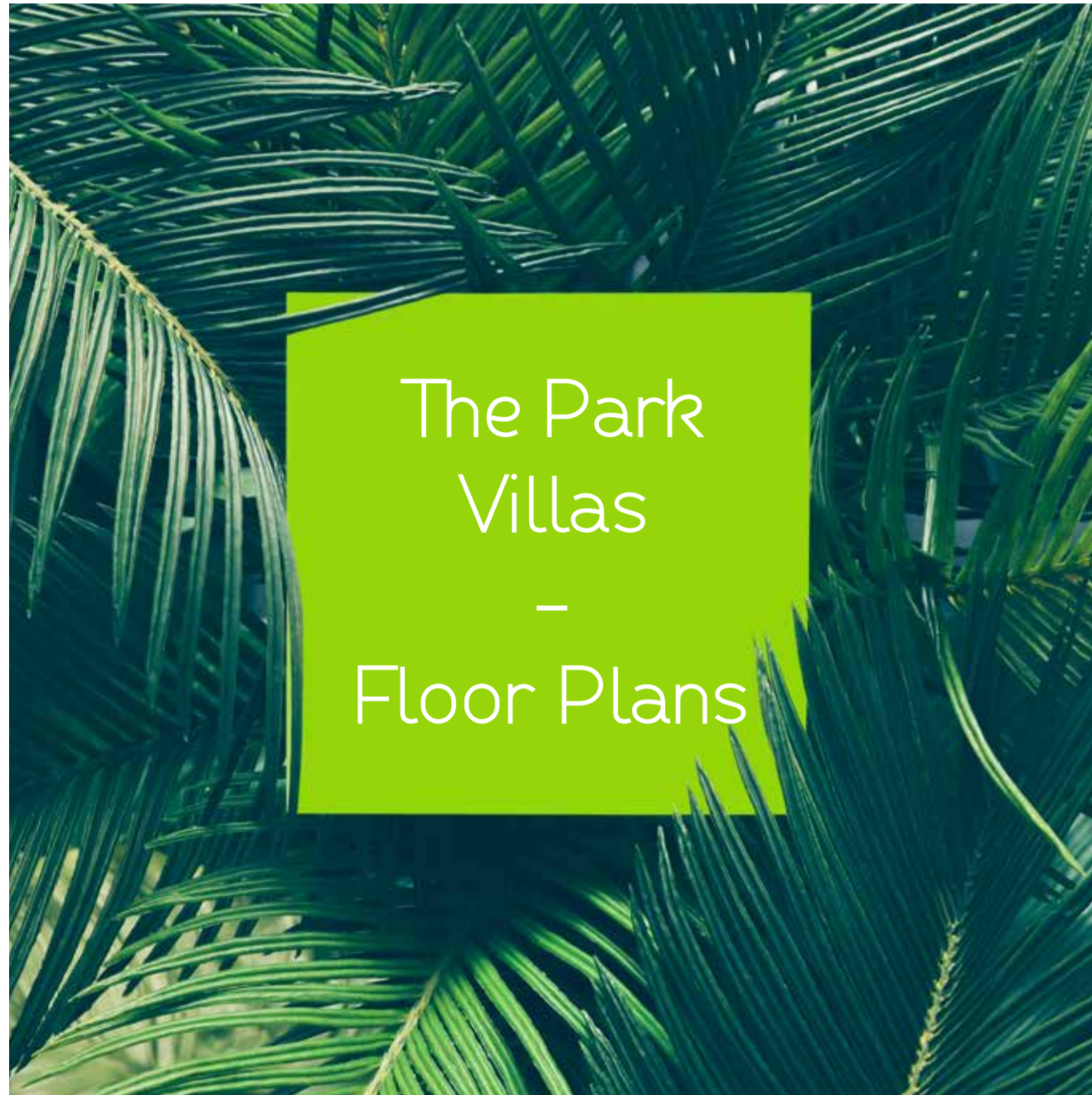
Feel a sense of belonging as you spend afternoons with friends and family at the beautifully designed events park.

Whether you choose to watch an outdoor movie, or savour the flavour at outdoor food markets, here's a place you'll make lasting bonds over enjoyable activities.



Where life is all about building community







Disclaimer: \*Unless stated above, all accessories and external finishes like Wardrobes, Wall paper, Chandeliers, Furniture, Electronics, White Goods, Curtains, hard and soft landscaping, pavements, features, swimming pool(s) etc. displayed in the brochure or within the show apartment/villa or between the plot boundary and the unit, are not part of the Standard Unit and exhibited for illustration purposes only.



**AVAILABLE IN**

- Longview
- The Field



First floor



Ground floor

Ground floor	First floor	Balcony	Total area
1,304.45	1,526.78	331.57	3,162.80

\*All the size are in sq ft.

Disclaimer: \*Unless stated above, all accessories and external finishes like Wardrobes, Wall paper, Chandeliers, Furniture, Electronics, White Goods, Curtains, hard and soft landscaping, pavements, features, swimming pool(s) etc. displayed in the brochure or within the show apartment/villa or between the plot boundary and the unit, are not part of the Standard Unit and exhibited for illustration purposes only.



**AVAILABLE IN**

- Calero
- Longview
- Pelham
- Rochester
- The Field



First floor



Ground floor

Ground floor	First floor	Balcony	Total area
1,687.41	1,754.49	450.48	3,892.37

\*All the size are in sq ft.

Disclaimer: \*Unless stated above, all accessories and external finishes like Wardrobes, Wall paper, Chandeliers, Furniture, Electronics, White Goods, Curtains, hard and soft landscaping, pavements, features, swimming pool(s) etc. displayed in the brochure or within the show apartment/villa or between the plot boundary and the unit, are not part of the Standard Unit and exhibited for illustration purposes only.



First floor



Ground floor

**AVAILABLE IN**

- Pelham

Ground floor	First floor	Balcony	Total area
1,674.34	1,625.92	327.18	3,627.44

\*All the size are in sq ft.

# TH-L TH-L-A

Disclaimer: \*Unless stated above, all accessories and external finishes like Wardrobes, Wall paper, Chandeliers, Furniture, Electronics, White Goods, Curtains, hard and soft landscaping, pavements, features, swimming pool(s) etc. displayed in the brochure or within the show apartment/villa or between the plot boundary and the unit, are not part of the Standard Unit and exhibited for illustration purposes only.



### TH-L AVAILABLE IN

- Pelham
- Richmond
- Rochester
- Rockwood
- Topanga
- Trinity

### TH-L-A AVAILABLE IN

- Longview
- Pelham
- Rochester
- Trinity

TH-L



First floor



Ground floor

Total area 2,800.92  
Balcony 212.56  
First floor 1,334.31  
Ground floor 1,254.05

\*All the size are in sq. ft.

TH-L-A



First floor



Ground floor

Total area 2,786.32  
Balcony 192.25  
First floor 1,332.99  
Ground floor 1,261.08

\*All the size are in sq. ft.

# TH-M TH-M1

Disclaimer: \*Unless stated above, all accessories and external finishes like Wardrobes, Wall paper, Chandeliers, Furniture, Electronics, White Goods, Curtains, hard and soft landscaping, pavements, features, swimming pool(s) etc. displayed in the brochure or within the show apartment/villa or between the plot boundary and the unit, are not part of the Standard Unit and exhibited for illustration purposes only.



## TH-M



First floor



Ground floor

Ground floor	960.91	First floor	997.91	Balcony	233.20	Total area	2,192.01
--------------	--------	-------------	--------	---------	--------	------------	----------

\*All the size are in sq.ft.

## TH-M1



First floor



Ground floor

Ground floor	900.85	First floor	1,158.42	Balcony	364.51	Total area	2,423.79
--------------	--------	-------------	----------	---------	--------	------------	----------

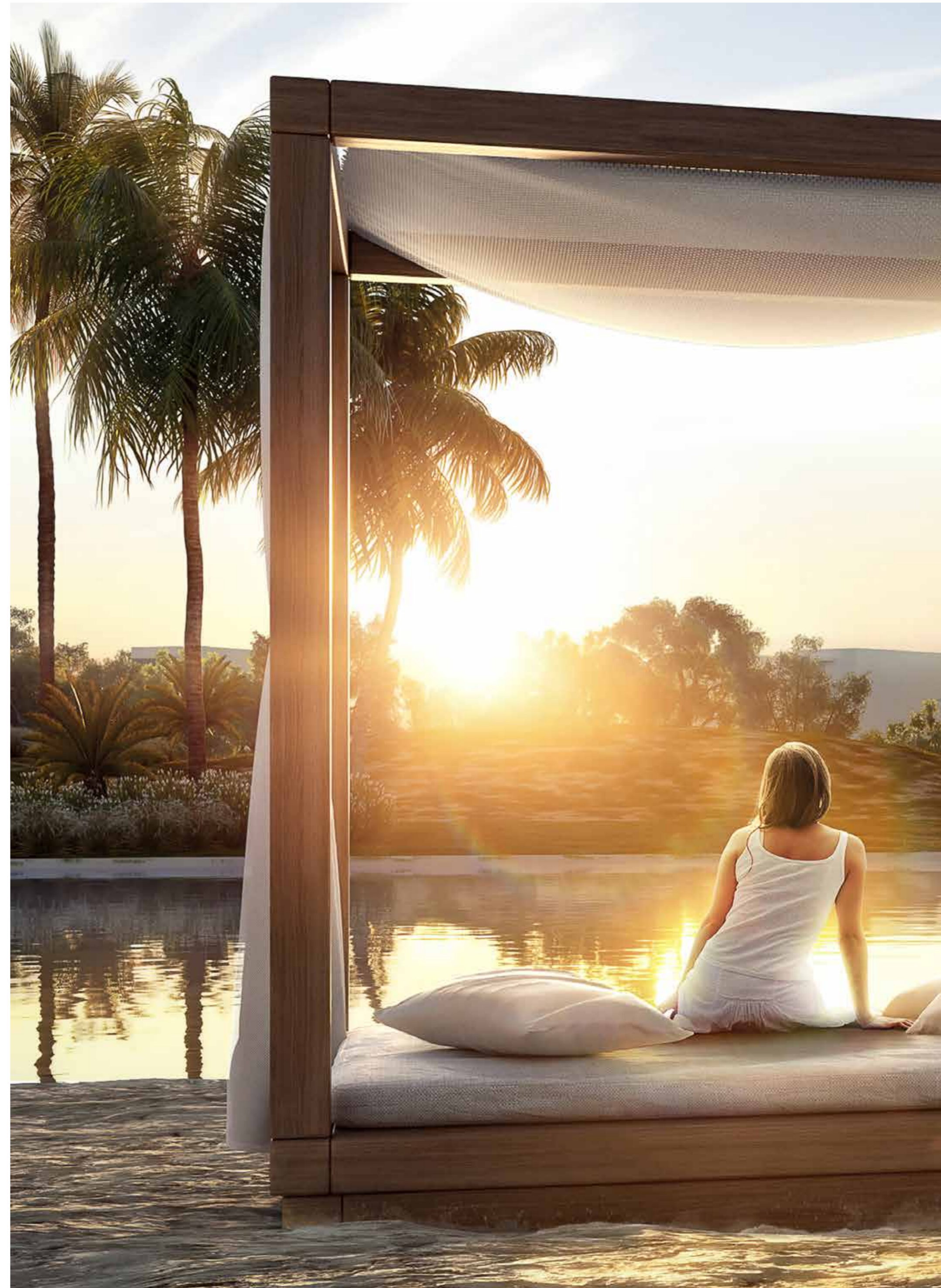
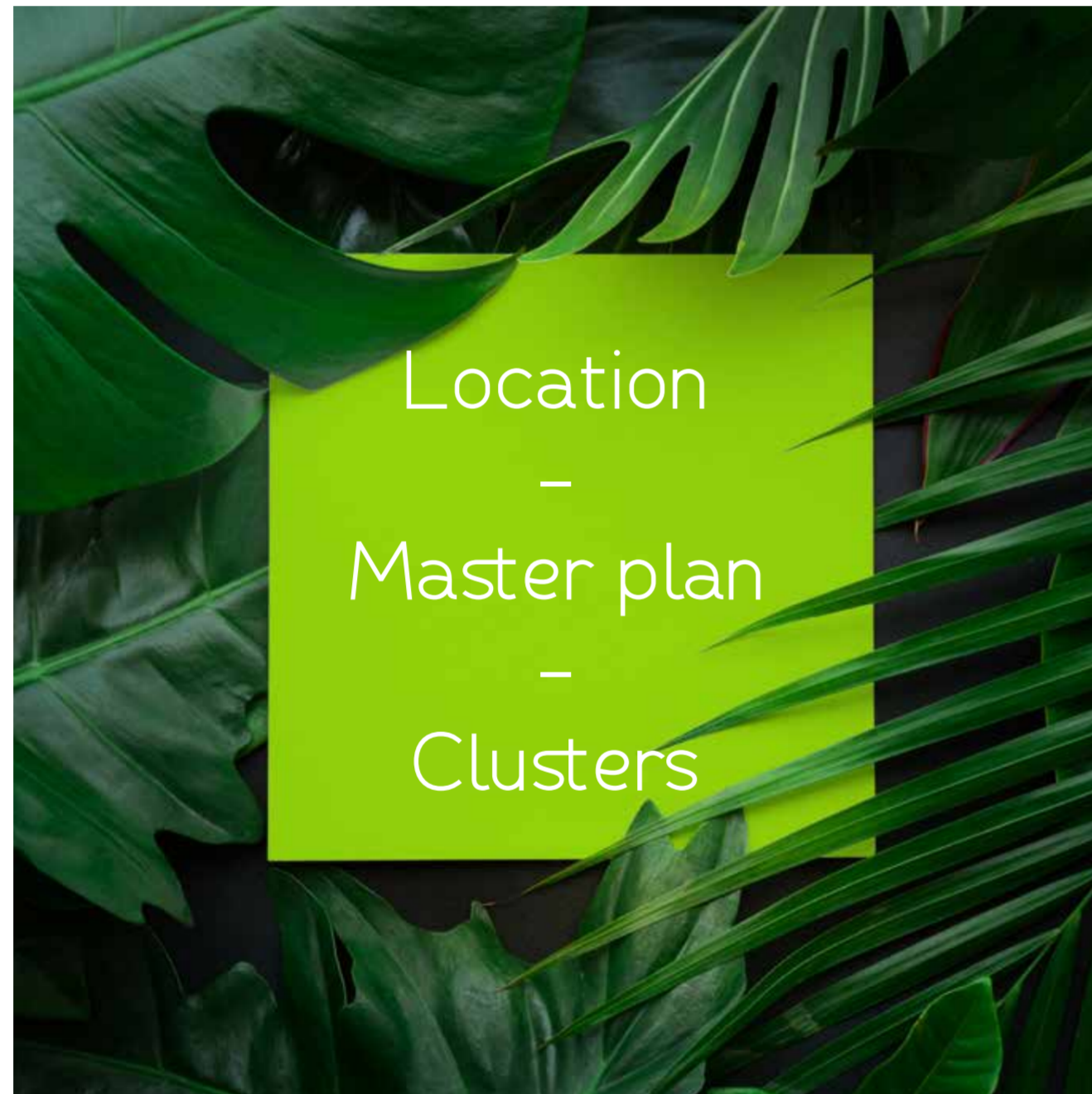
\*All the size are in sq.ft.

### TH-M AVAILABLE IN

- Pelham

### TH-M1 AVAILABLE IN

- Pelham
- Richmond
- Rochester
- Topanga





# Calero

V-4



# Pelham

- TH-L
- TH-L-A
- TH-M
- TH-M1
- V-5
- V-4



## A dream location

Just a short journey from the centre of the city, and yet feels like a world away. DAMAC Hills is nestled within the city's flourishing and most sought-after expanses of Dubailand.



FENDI STYLED VILLAS  
Interior Design by FENDI CASA

THE DRIVE

THE TRUMP ESTATES



THE PARK

Its strategic location allows easy access to the main road network that puts the city within a few minutes' reach.



Richmond

- TH-L
- TH-M1



Rockwood

- TH-L



Rochester

- TH-L
- TH-L-A
- TH-M1
- V-4



The Field

- V-2
- V-4







### Topanga

- TH-L
- TH-M1



### Longview

- TH-L-A
- V-2
- V-4



### Trinity

- TH-L
- TH-L-A

