

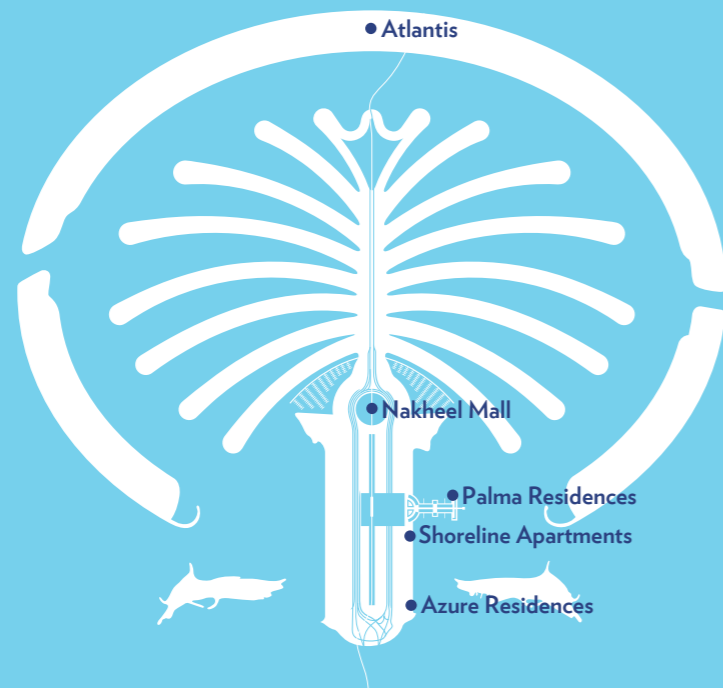
AZURE  
*Residences*

# A BEAUTIFUL PLACE TO LIVE

Azure Residences is located on the famed Palm Jumeirah. This picturesque setting offers an inviting beachfront lifestyle, edged by the tranquil waters of the Gulf.

Palm Jumeirah is the project that started it all. A testament to the nation's development, Palm Jumeirah is a world-famous landmark. Created in 2001, it takes its shape from a cultural symbol of the region, the palm tree, and forms a remarkable man-made island that has increased Dubai's shoreline by 100%.

Across the island: luxury hotels, desirable residences, first-rate leisure and entertainment. Palm Jumeirah is now one of the most exclusive residential addresses in the world. Dining venues make the most of this impressive location. And visitors throng to the celebrated leisure attractions and events.





# MASTER PLAN





# AZURE RESIDENCES

Azure Residences combines the simple elements of great living, and accomplishes them with superb detail. The crisp, elegantly-designed ten-storey building stands on 27,000 m<sup>2</sup> of beachfront.

170 upscale modern apartments of one and two bedrooms command views of the pool, beach and beyond. Furnished to the highest standards, they feature generous balconies for residents to make the most of the wonderful location.

The first-rate amenities at residents' disposal include a rooftop gym, pristine beach, parking and a stunning infinity pool on the water's edge.

Restaurants and cafes at ground level provide a choice of dining options, adding to the vivacious atmosphere. While out on its own jetty, the signature breakwater restaurant offers unforgettable 360-degree views of this beautiful setting.





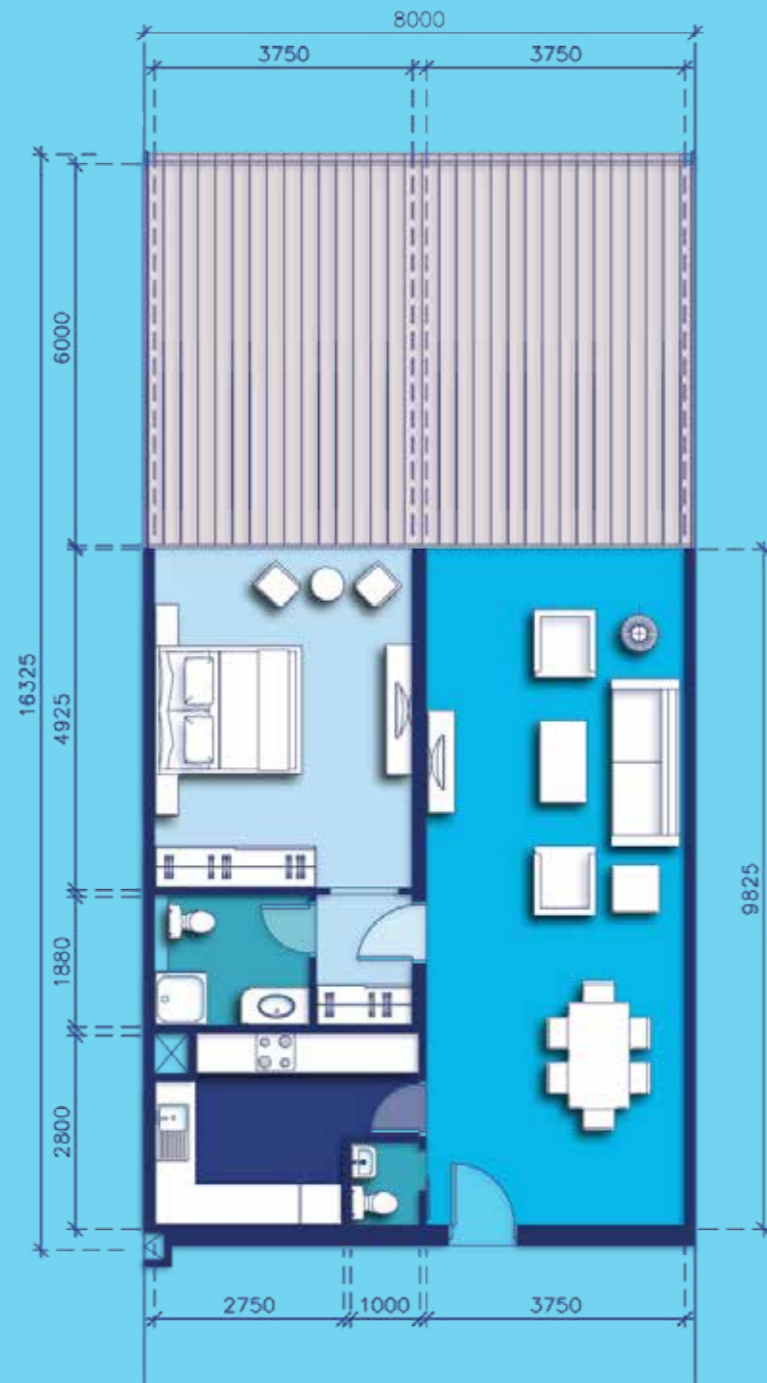


AZIDE RESIDENCES



# 1-BEDROOM A

TYPICAL APARTMENT



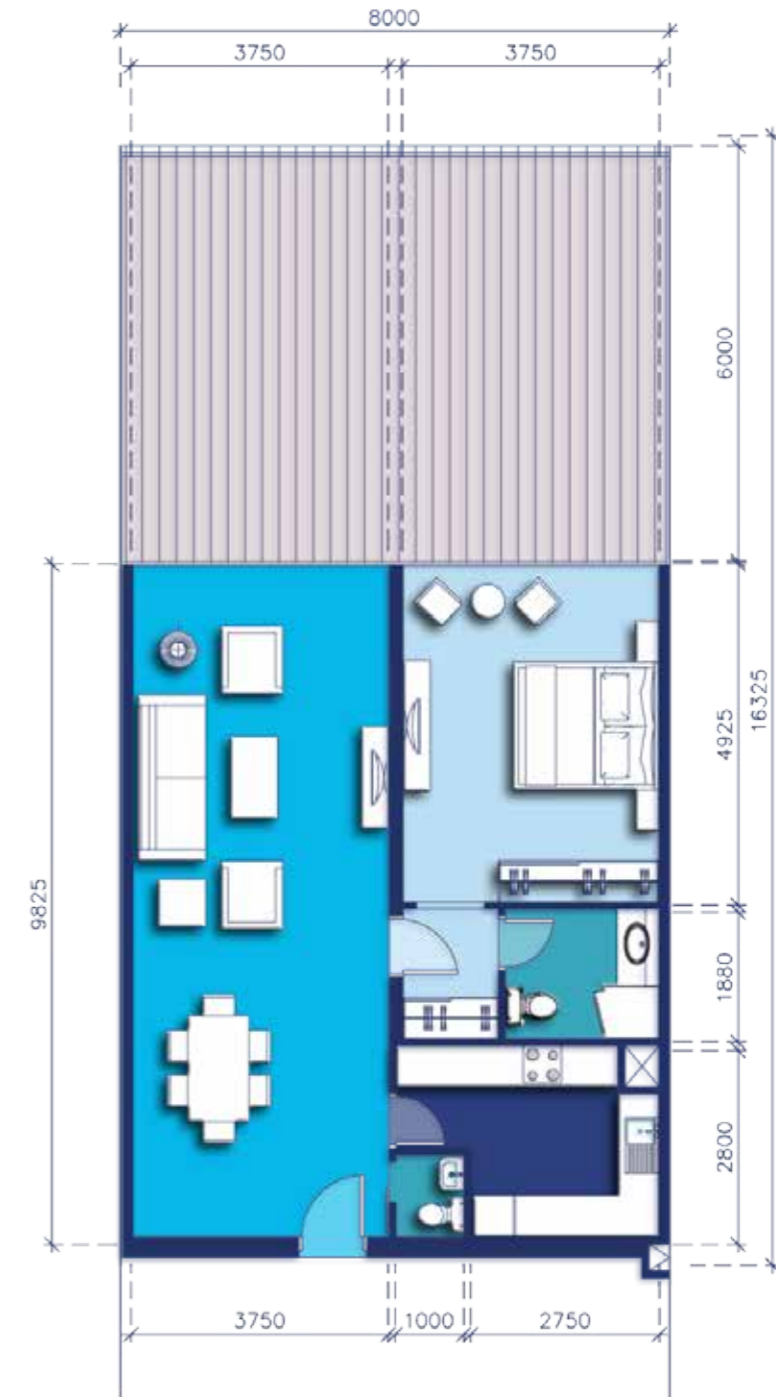
- ENTRANCE LOBBY & RECEPTION
- KITCHENETTE
- BEDROOM & DRESSING
- BATHROOM

TERRACE	50 m <sup>2</sup>
RECEPTION & DINING	42 m <sup>2</sup>
BEDROOM	20 m <sup>2</sup>
BATHROOM	5 m <sup>2</sup>
KITCHEN	11 m <sup>2</sup>
GUEST TOILET	2 m <sup>2</sup>
AREA	80 m <sup>2</sup>
AREA WITH TERRACE	130 m <sup>2</sup>
COUNTS	7

Numbers, square footage and floor plans are approximate. Final dimensions, square footage and floor plans may vary.

# 1-BEDROOM B

TYPICAL APARTMENT



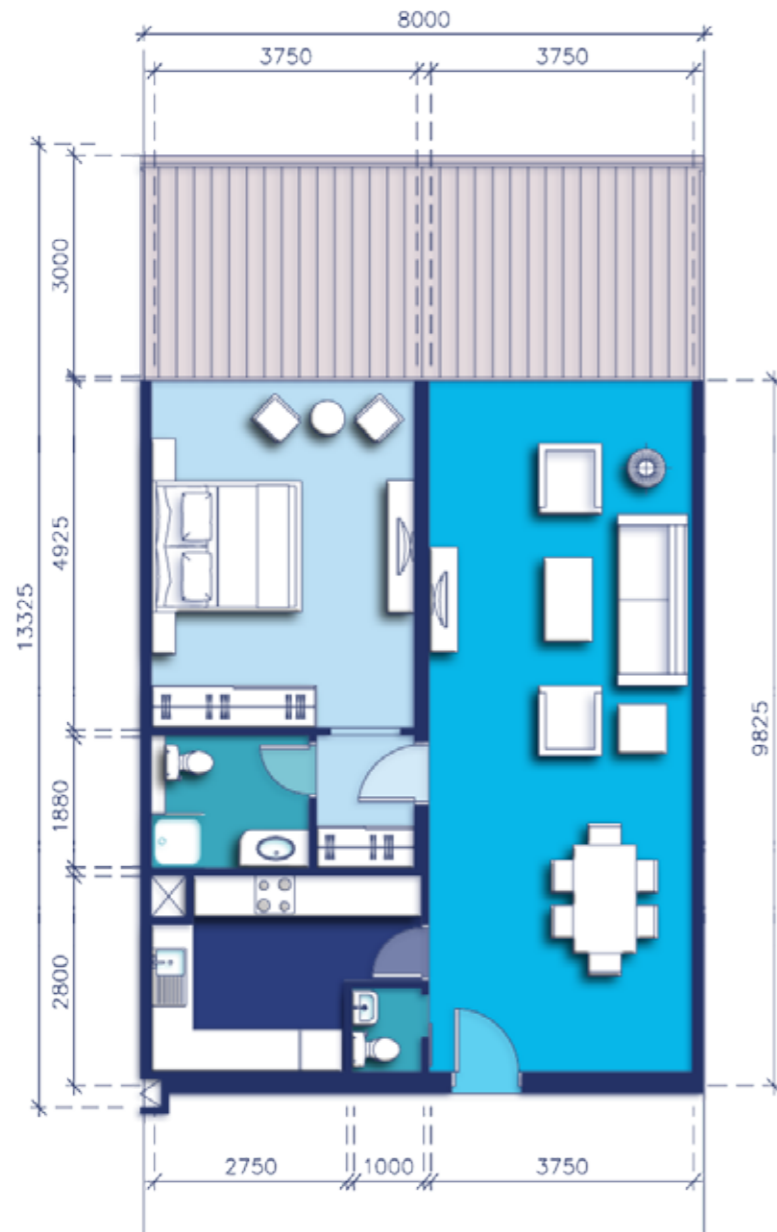
- ENTRANCE LOBBY & RECEPTION
- KITCHENETTE
- BEDROOM & DRESSING
- BATHROOM

TERRACE	50 m <sup>2</sup>
RECEPTION & DINING	42 m <sup>2</sup>
BEDROOM	20 m <sup>2</sup>
BATHROOM	5 m <sup>2</sup>
KITCHEN	11 m <sup>2</sup>
GUEST TOILET	2 m <sup>2</sup>
AREA	80 m <sup>2</sup>
AREA WITH TERRACE	130 m <sup>2</sup>
COUNTS	7

Numbers, square footage and floor plans are approximate. Final dimensions, square footage and floor plans may vary.

# 1-BEDROOM C

TYPICAL APARTMENT



- ENTRANCE LOBBY & RECEPTION
- KITCHENETTE
- BEDROOM & DRESSING
- BATHROOM

TERRACE	25.5 m <sup>2</sup>
RECEPTION & DINING	42 m <sup>2</sup>
BEDROOM	20 m <sup>2</sup>
BATHROOM	5 m <sup>2</sup>
KITCHEN	11 m <sup>2</sup>
GUEST TOILET	2 m <sup>2</sup>
AREA	80 m <sup>2</sup>
AREA WITH TERRACE	105.5 m <sup>2</sup>
COUNTS	63

Numbers, square footage and floor plans are approximate. Final dimensions, square footage and floor plans may vary.

# 1-BEDROOM D

TYPICAL APARTMENT



- ENTRANCE LOBBY & RECEPTION
- KITCHENETTE
- BEDROOM & DRESSING
- BATHROOM

TERRACE	25.5 m <sup>2</sup>
RECEPTION & DINING	42 m <sup>2</sup>
BEDROOM	20 m <sup>2</sup>
BATHROOM	5 m <sup>2</sup>
KITCHEN	11 m <sup>2</sup>
GUEST TOILET	2 m <sup>2</sup>
AREA	80 m <sup>2</sup>
AREA WITH TERRACE	105.5 m <sup>2</sup>
COUNTS	63

Numbers, square footage and floor plans are approximate. Final dimensions, square footage and floor plans may vary.

# 2-BEDROOM A

CORNER APARTMENT



- ENTRANCE LOBBY & RECEPTION
- KITCHENETTE
- BEDROOM & DRESSING
- BATHROOM

TERRACE 1	50.5 m <sup>2</sup>
TERRACE 2	26.5 m <sup>2</sup>
AREA	77 m <sup>2</sup>
RECEPTION & DINING	54.5 m <sup>2</sup>
BEDROOM 1	22 m <sup>2</sup>
BEDROOM 2	22 m <sup>2</sup>
BATHROOM 1	5 m <sup>2</sup>
BATHROOM 2	5 m <sup>2</sup>
MAID ROOM	8 m <sup>2</sup>
MAID BATHROOM	4 m <sup>2</sup>
KITCHEN	23 m <sup>2</sup>
GUEST TOILET	1.5 m <sup>2</sup>
AREA	145 m <sup>2</sup>
AREA WITH TERRACE	222 m <sup>2</sup>
COUNTS	1

Numbers, square footage and floor plans are approximate. Final dimensions, square footage and floor plans may vary.

# 2-BEDROOM B

CORNER APARTMENT



- ENTRANCE LOBBY & RECEPTION
- KITCHENETTE
- BEDROOM & DRESSING
- BATHROOM

TERRACE 1	50.5 m <sup>2</sup>
TERRACE 2	26.5 m <sup>2</sup>
AREA	77 m <sup>2</sup>
RECEPTION & DINING	54.5 m <sup>2</sup>
BEDROOM 1	22 m <sup>2</sup>
BEDROOM 2	22 m <sup>2</sup>
BATHROOM 1	5 m <sup>2</sup>
BATHROOM 2	5 m <sup>2</sup>
MAID ROOM	8 m <sup>2</sup>
MAID BATHROOM	4 m <sup>2</sup>
KITCHEN	23 m <sup>2</sup>
GUEST TOILET	1.5 m <sup>2</sup>
AREA	145 m <sup>2</sup>
AREA WITH TERRACE	222 m <sup>2</sup>
COUNTS	2

Numbers, square footage and floor plans are approximate. Final dimensions, square footage and floor plans may vary.



# 2-BEDROOM C

CORNER APARTMENT



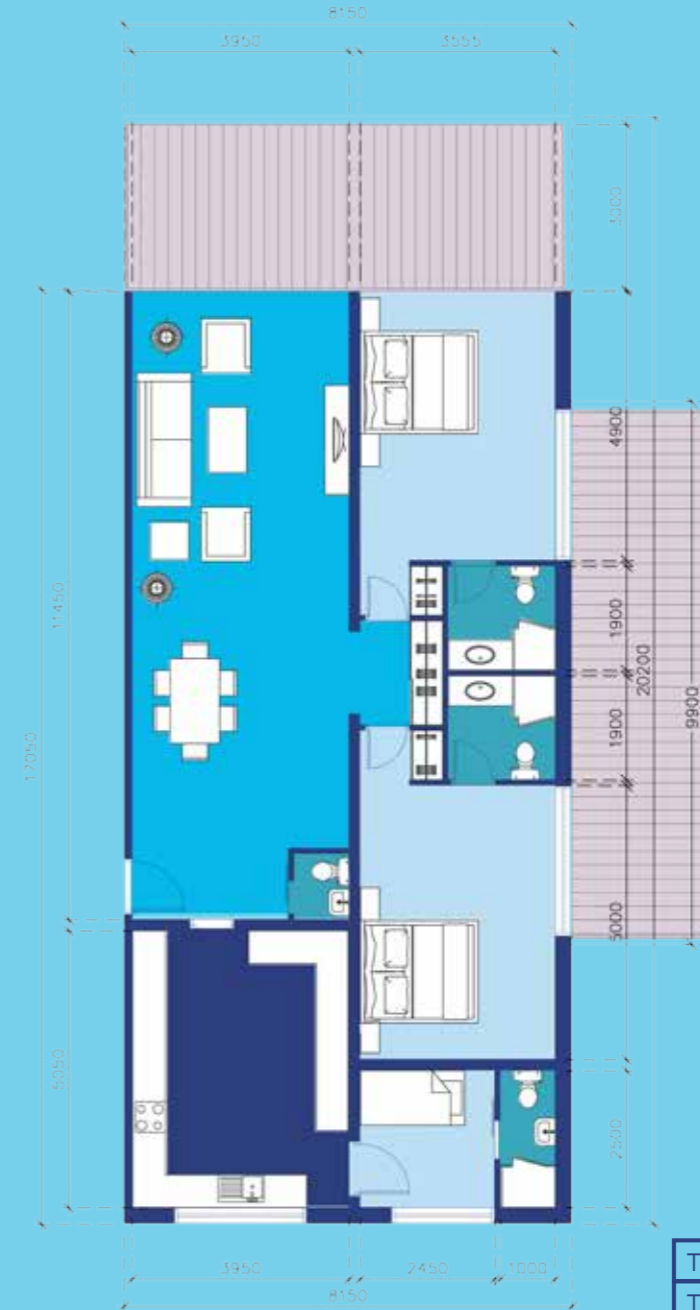
TERRACE 1	25.5 m <sup>2</sup>
TERRACE 2	26.5 m <sup>2</sup>
AREA	52 m <sup>2</sup>
RECEPTION & DINING	54.5 m <sup>2</sup>
BEDROOM 1	22 m <sup>2</sup>
BEDROOM 2	22 m <sup>2</sup>
BATHROOM 1	5 m <sup>2</sup>
BATHROOM 2	5 m <sup>2</sup>
MAID ROOM	8 m <sup>2</sup>
MAID BATHROOM	4 m <sup>2</sup>
KITCHEN	23 m <sup>2</sup>
GUEST TOILET	1.5 m <sup>2</sup>
AREA	145 m <sup>2</sup>
AREA WITH TERRACE	197 m <sup>2</sup>
COUNTS	9

- ENTRANCE LOBBY & RECEPTION
- KITCHENETTE
- BEDROOM & DRESSING
- BATHROOM

Numbers, square footage and floor plans are approximate. Final dimensions, square footage and floor plans may vary.

# 2-BEDROOM D

CORNER APARTMENT



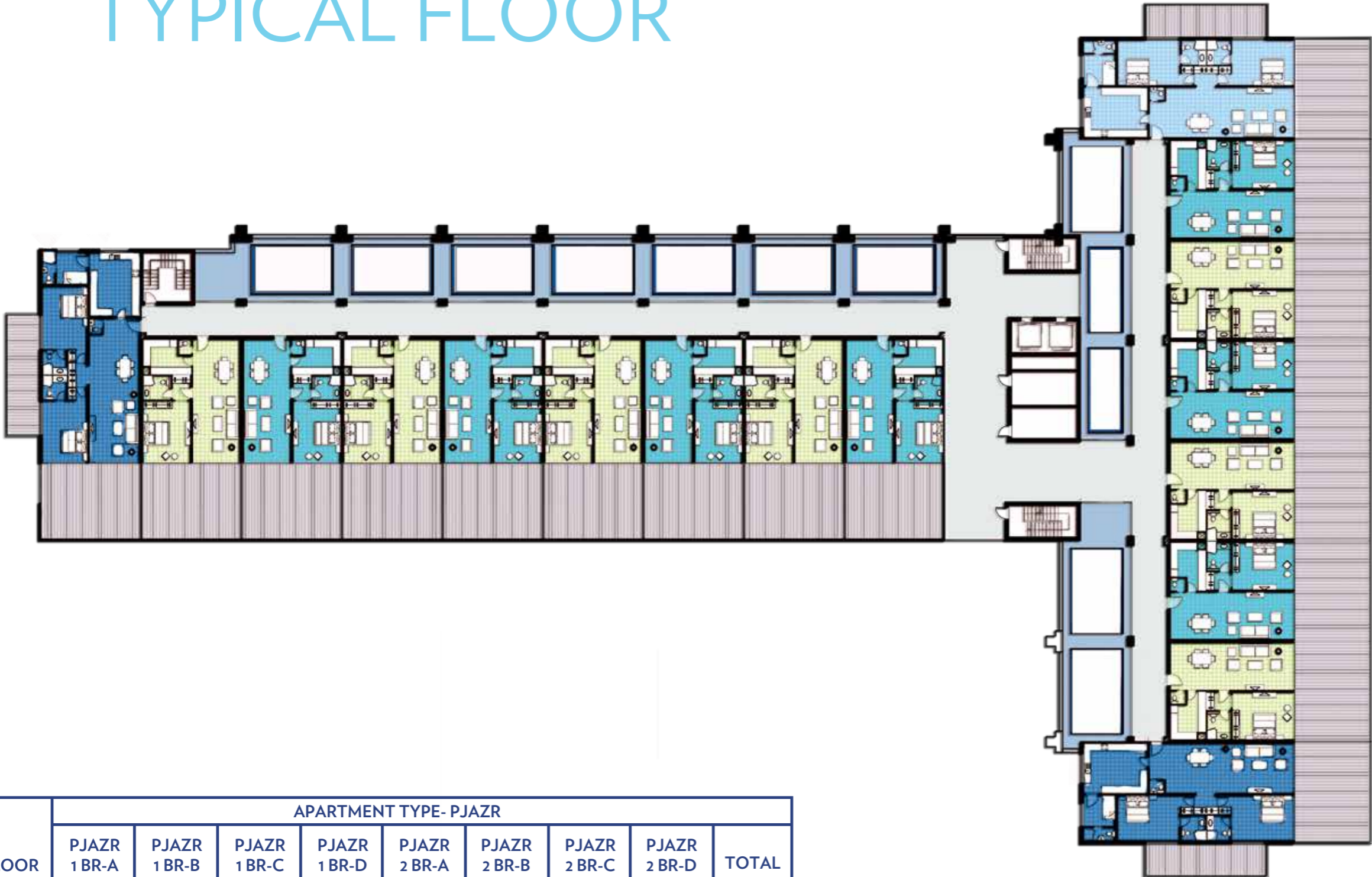
TERRACE 1	25.5 m <sup>2</sup>
TERRACE 2	26.5 m <sup>2</sup>
AREA	52 m <sup>2</sup>
RECEPTION & DINING	54.5 m <sup>2</sup>
BEDROOM 1	22 m <sup>2</sup>
BEDROOM 2	22 m <sup>2</sup>
BATHROOM 1	5 m <sup>2</sup>
BATHROOM 2	5 m <sup>2</sup>
MAID ROOM	8 m <sup>2</sup>
MAID BATHROOM	4 m <sup>2</sup>
KITCHEN	23 m <sup>2</sup>
GUEST TOILET	1.5 m <sup>2</sup>
AREA	145 m <sup>2</sup>
AREA WITH TERRACE	197 m <sup>2</sup>
COUNTS	18

- ENTRANCE LOBBY & RECEPTION
- KITCHENETTE
- BEDROOM & DRESSING
- BATHROOM

Numbers, square footage and floor plans are approximate. Final dimensions, square footage and floor plans may vary.



# TYPICAL FLOOR



FLOOR	APARTMENT TYPE- PJAZR								TOTAL
	PJAZR 1 BR-A	PJAZR 1 BR-B	PJAZR 1 BR-C	PJAZR 1 BR-D	PJAZR 2 BR-A	PJAZR 2 BR-B	PJAZR 2 BR-C	PJAZR 2 BR-D	
1 <sup>st</sup>	7	7	-	-	1	2	-	-	17
2 <sup>nd</sup>	-	-	7	7	-	-	1	2	17
3 <sup>rd</sup>	-	-	7	7	-	-	1	2	17
4 <sup>th</sup>	-	-	7	7	-	-	1	2	17
5 <sup>th</sup>	-	-	7	7	-	-	1	2	17
6 <sup>th</sup>	-	-	7	7	-	-	1	2	17
7 <sup>th</sup>	-	-	7	7	-	-	1	2	17
8 <sup>th</sup>	-	-	7	7	-	-	1	2	17
9 <sup>th</sup>	-	-	7	7	-	-	1	2	17
10 <sup>th</sup>	-	-	7	7	-	-	1	2	17
<b>TOTAL</b>	7	7	63	63	1	2	9	18	170

- HALLWAY
- 1 BR-C
- 1 BR-D
- 2 BR-C
- 2 BR-D

Numbers, square footage and floor plans are approximate. Final dimensions, square footage and floor plans may vary.

The developer reserves the right to make revisions. All the measurements and drawings are approximate. This information is subject to change without notice. Don't scale drawings. Artistic renderings, landscaping and images are for illustrative purposes only and are subject to change without notice. All information is accurate at the time of print, July 2016.



**Contact Us**

*24/7 Sales Contact No.*

+971 4 248 3445

*For More Details Visit*

<http://azure-residences.goldpillars.ae>