



**MBL
RESIDENCE**

JUMEIRAH LAKES TOWERS, DUBAI

**إم بي إل
ريزدنس**

أبراج بحيرات الجميرا، دبي

CLOSENESS IS LUXURY

MBL Waterfront Residence is a new, mixed-use luxurious tower in Dubai's prosperous and thriving community of Jumeirah Lakes Towers. With lounge areas in the lower levels, surrounded by fantastic retail, outstanding restaurants and unparalleled amenities MBL is a waterfront property bar none.

- 1, 2 and 3 Bedroom Luxury Apartments
- Easy access to Sheikh Zayed and Al Khail Road
- Located in the heart of Jumeirah Lakes Towers
- Handover in Dec 2020
- Walkable distance to JLT Metro Stations

Situated in the heart of the new Dubai on Sheikh Zayed Road and between two metro stations, Jumeirah Lakes Towers, is the ideal address to work and live.



EASY ACCESS TO METRO STATION



LOCATION



**MBL
RESIDENCE**

K2, JLT, DUBAI

JABAL ALI 2
جبل علي 2

DUBAI
INTERNATIONAL
MARINE CLUB

DUBAI MARINA
دبي مارينا

JUMEIRAH
LAKES TOWERS
أبراج بحيرات
الجميرا

JUMEIRAH
HEIGHTS

JUMEIRAH
ISLANDS
جزر جميرا

EMIRATES
HILLS 2
تلال الإمارات ٢

DUBAI
INTERNET CITY
مدينة دبي
للإنترنت

KNOWLEDGE
VILLAGE
قرية المعرفة

THE GREENS
THE VIEWS

MAEEN
THE LAKES
البحيرات
DEEMA

EMIRATES HILLS
تلال الإمارات

BARSHA HEIGHTS

FLAMINGO
VILLAS

SPRINGS 9
SPRINGS 10
SPRINGS 11

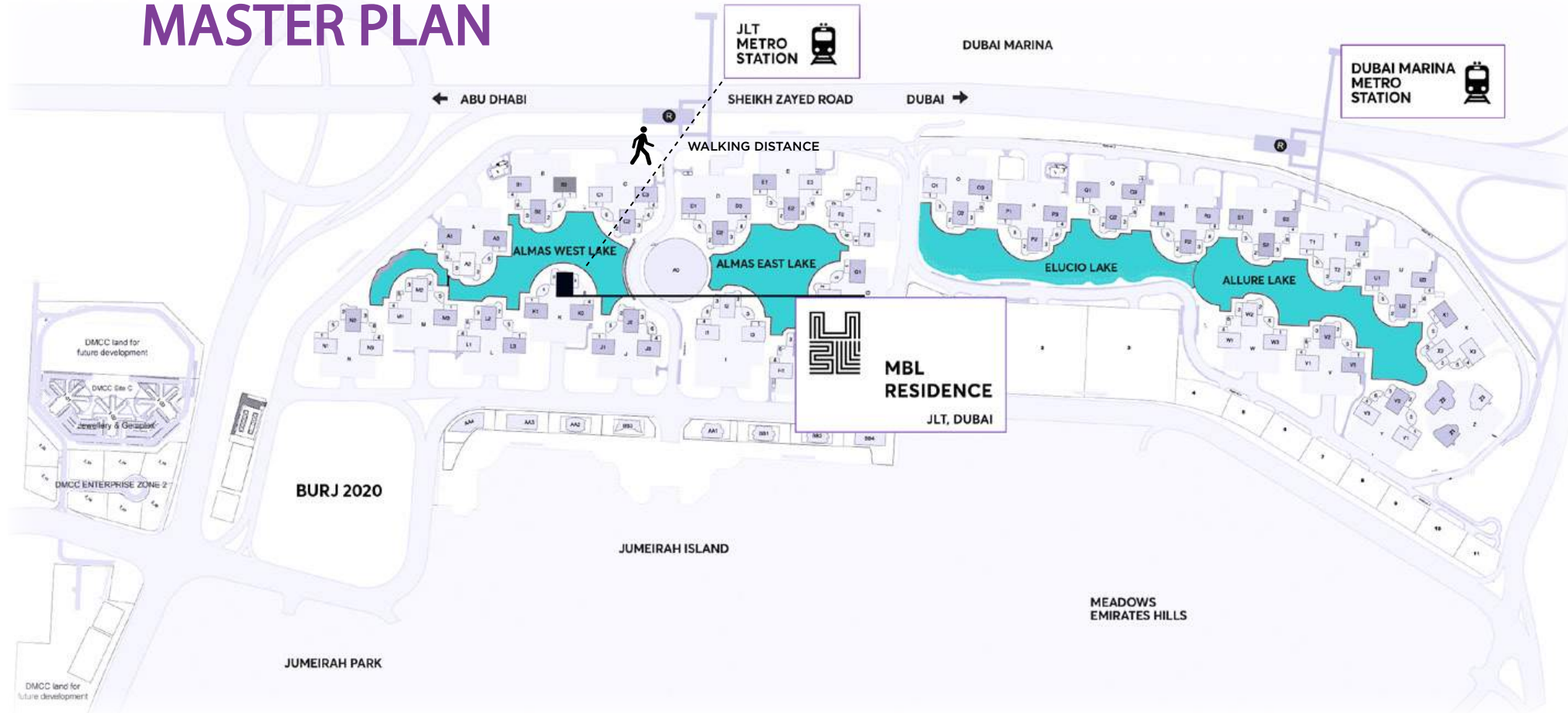
SPRINGS 15

SPRINGS

ACCESSIBILITY

- 5 minutes away from Dubai Marina
- 7 minutes away from Jumeirah Beach Residence
- 15 minutes away from Downtown Dubai
- 20 minutes away from Dubai Creek
- 20 minutes away from Dubai International Airport
- 20 minutes away from Al Maktoum International Airport
- 40 minutes away from Abu Dhabi International Airport

MASTER PLAN



AMENITIES

- Fully-equipped gymnasium
- Adult and family swimming pool
- Concierge service
- Barbecue area
- Outdoor Jacuzzi
- 24/7 security
- Children's play area



COMMUNITY



5 Hotels



3 Universities



540+ Retail Outlets



Restaurants & Cafés



Supermarkets



Medical Centres



80+ Towers



Park & Running Tracks

LAYOUTS

ONE BEDROOM LAYOUT

TYPE A

NET AREA

691.8

+

BALCONY AREA

78.15

769.95

SQ.FT



NORTH-WEST ENTRANCE

ONE BEDROOM LAYOUT

TYPE B

NET AREA

724.84

+

BALCONY AREA

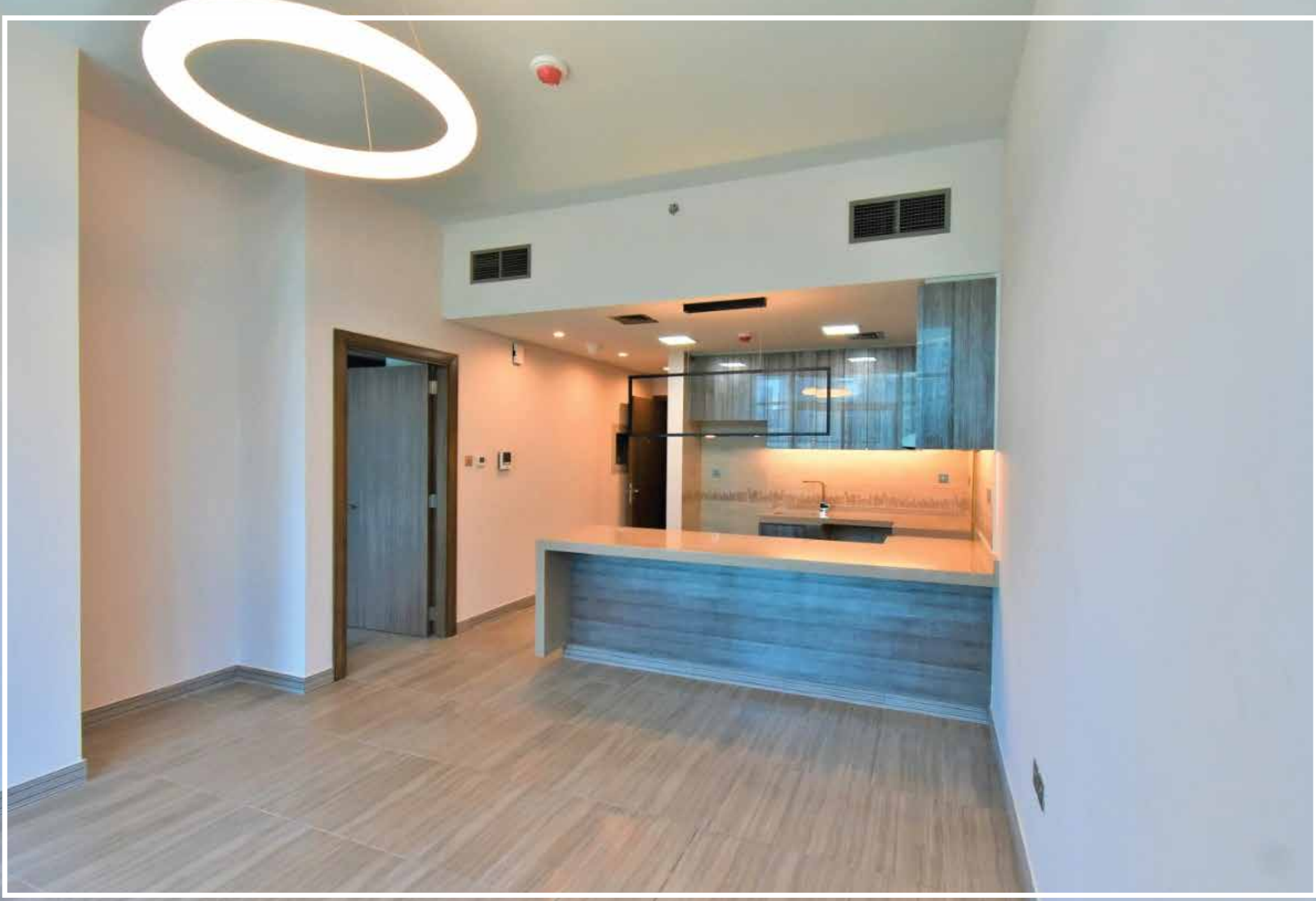
86.86

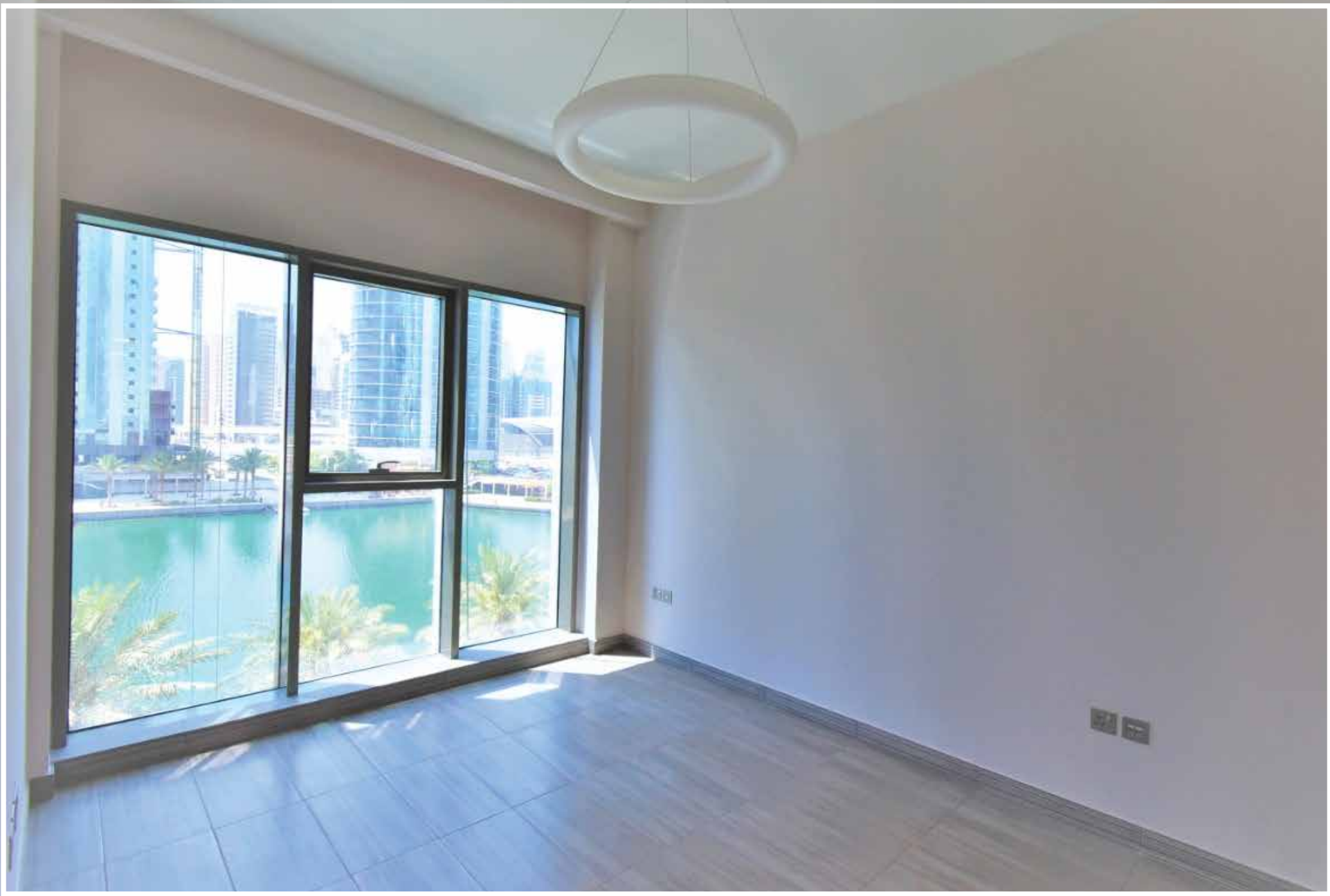
811.71

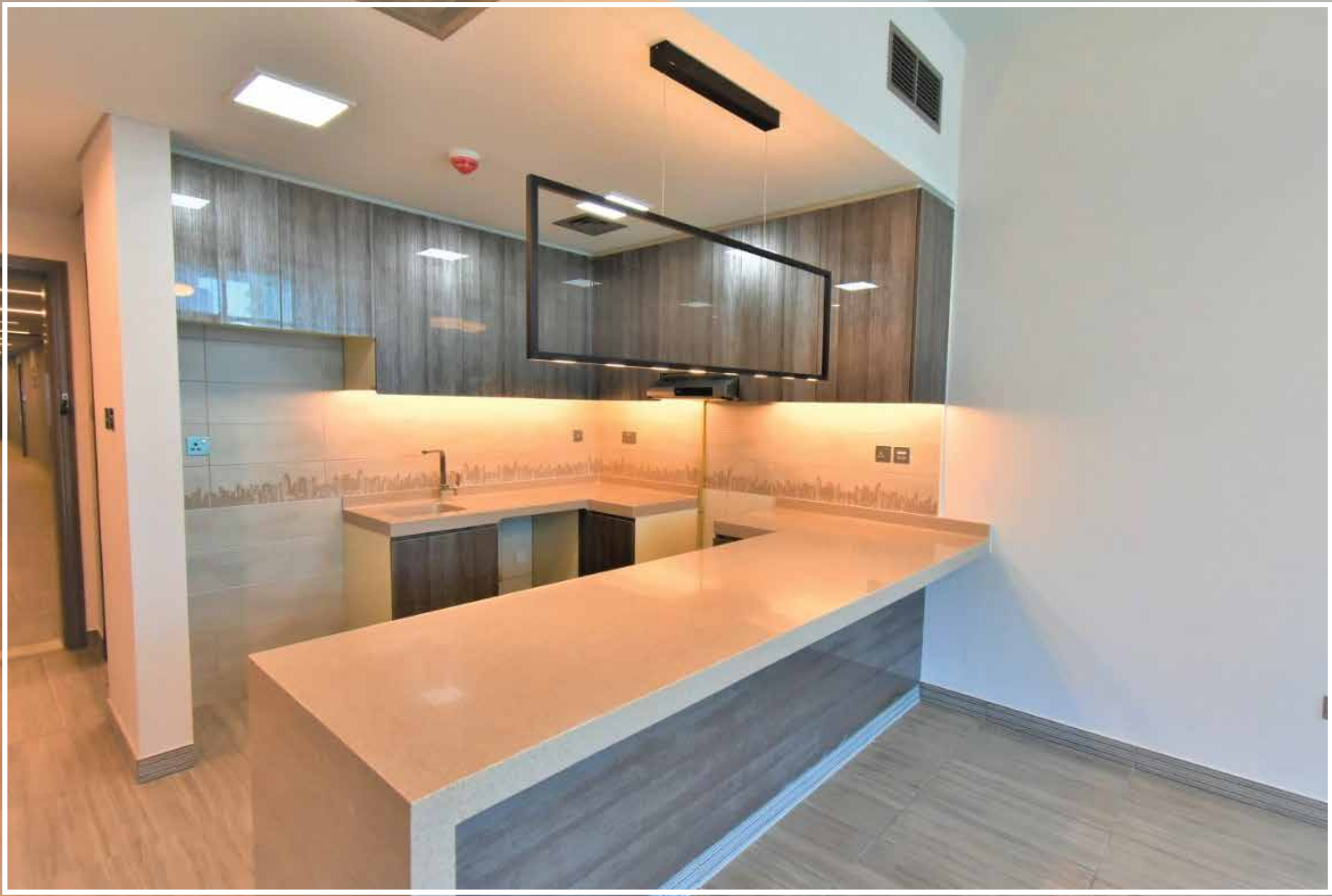
SQ.FT

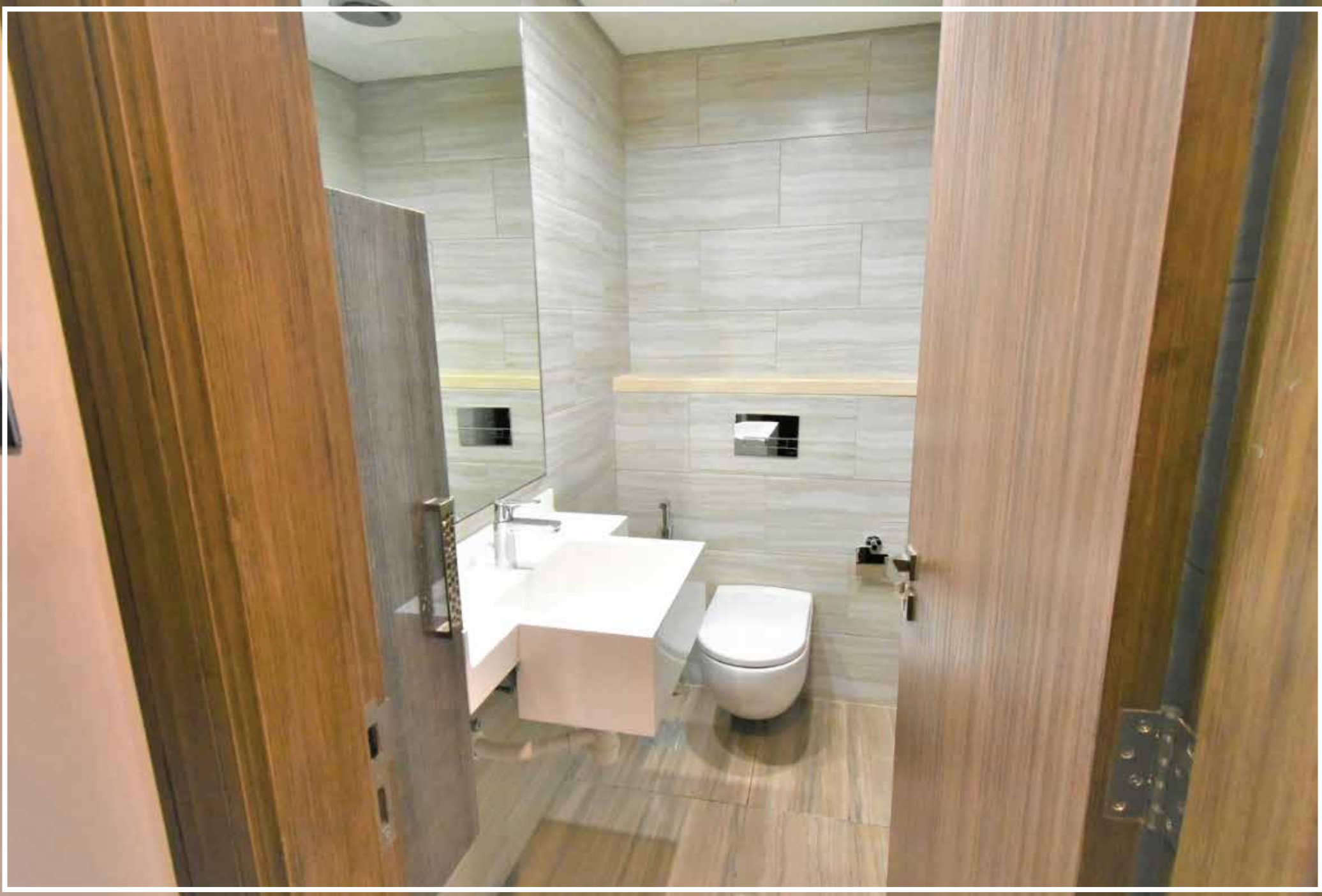


SOUTH WEST









TWO BEDROOM LAYOUT

TYPE A

NET AREA

1277.57 + 100.97

1378.54

SQ.FT

BALCONY AREA



SOUTH WEST
ENTRANCE

TWO BEDROOM LAYOUT

TYPE B

NET AREA

1279.94 + 98.81

1378.75

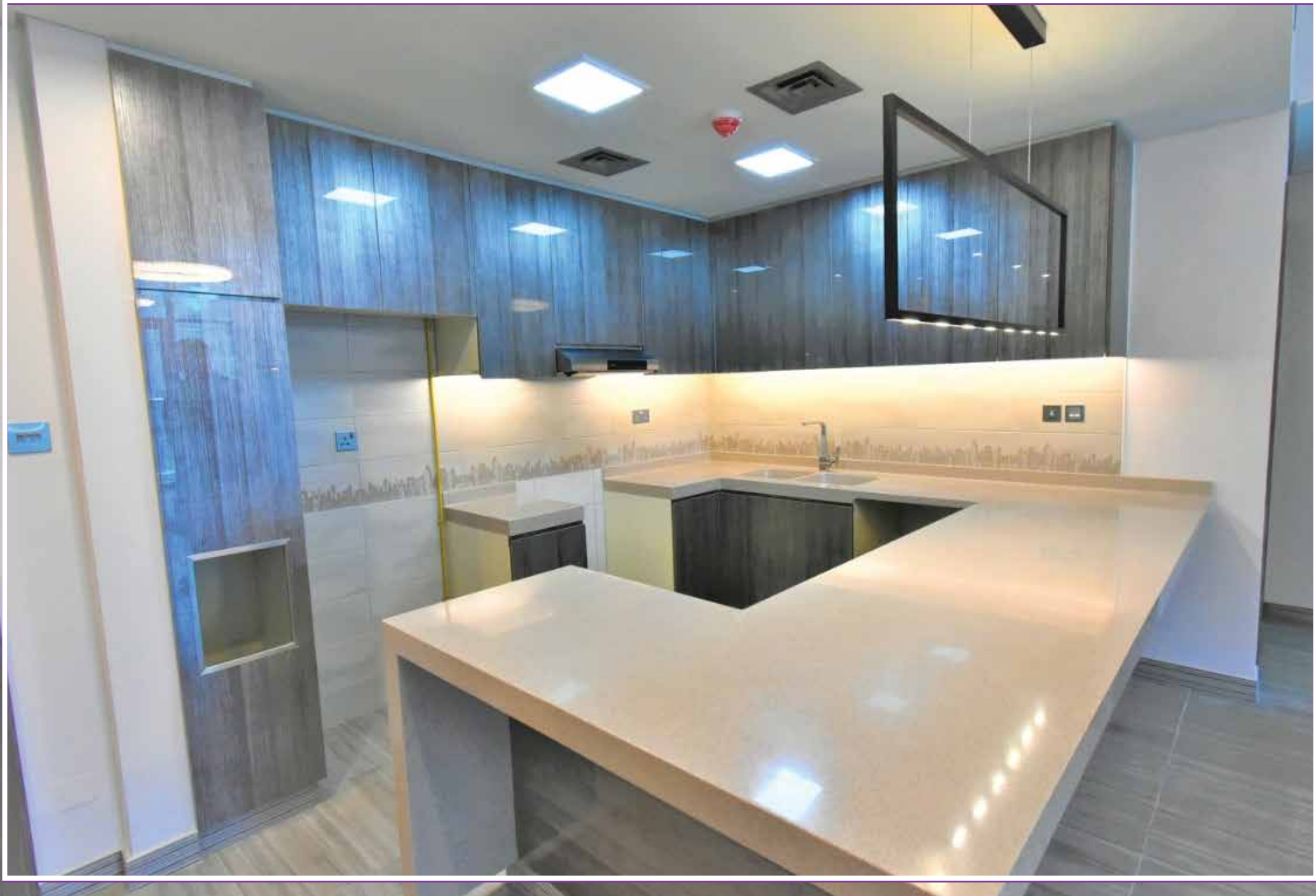
SQ.FT

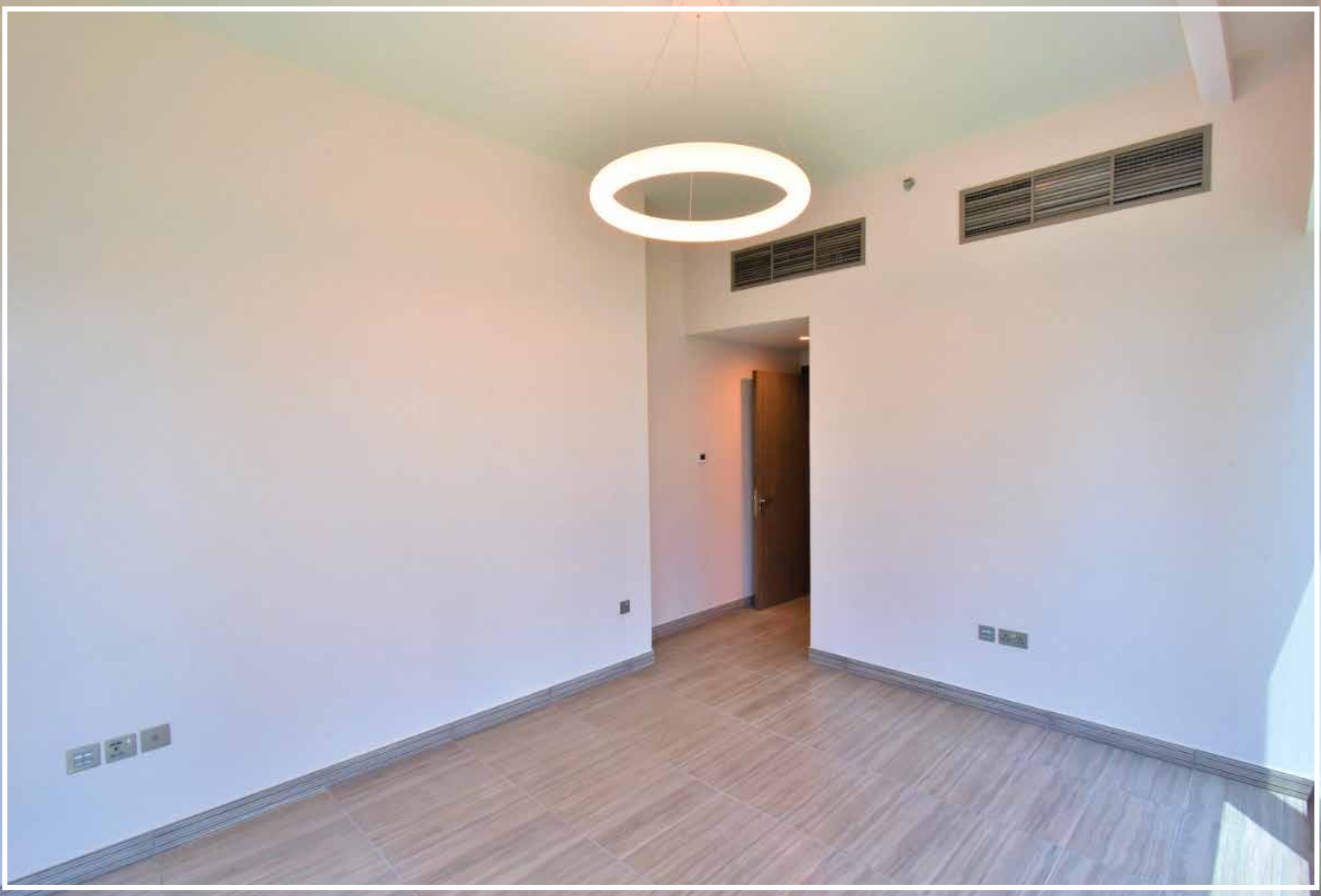
BALCONY AREA



SOUTH WEST
ENTRANCE





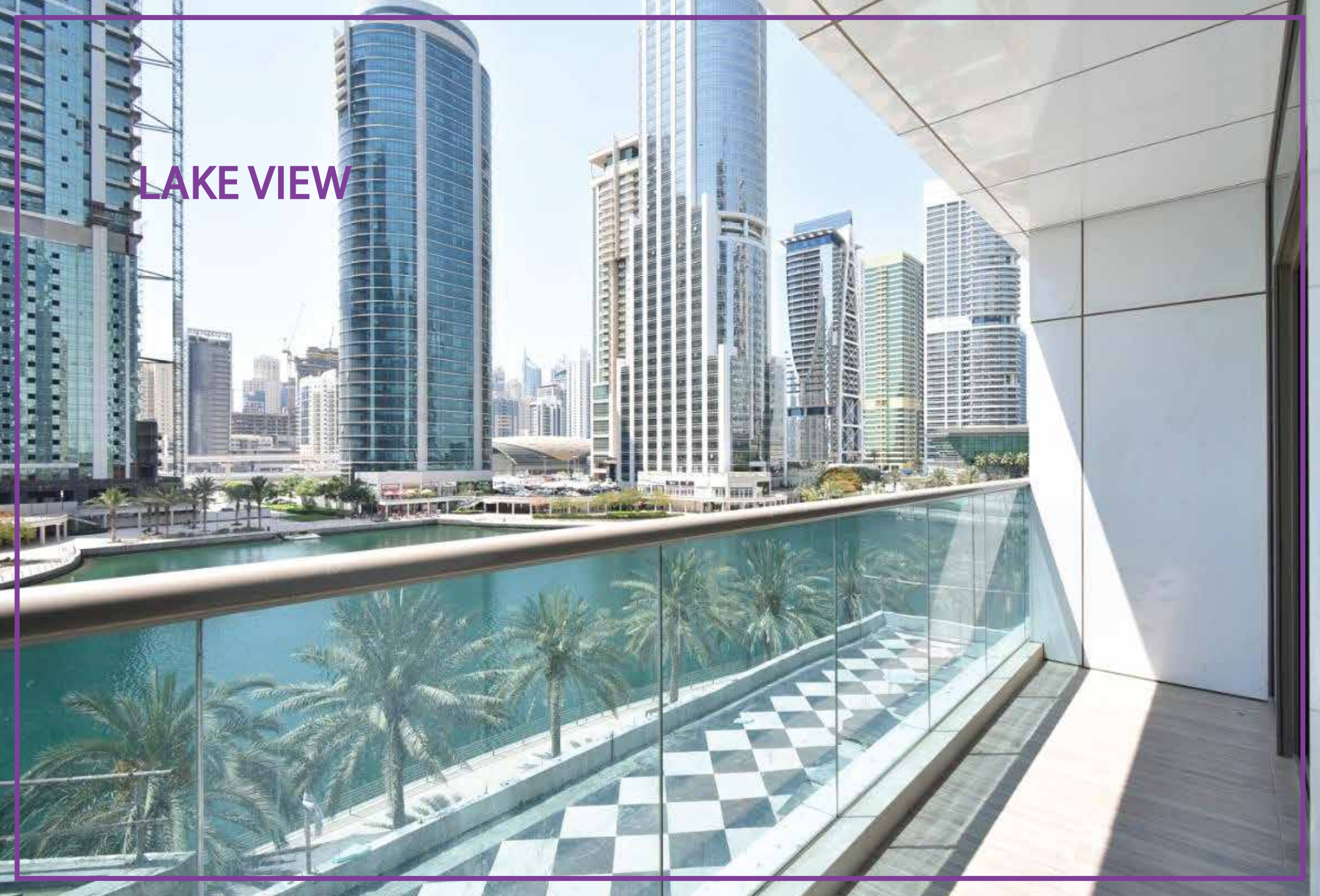




JUMEIRAH ISLAND VIEW



LAKE VIEW



PAYMENT PLAN

Option 1

- Handover payment plan
- 15% down payment and 85% on handover

Option 2

- Lease to own payment Plan
- 10% down payment and 90% over 3 or 5 years

CONSTRUCTION UPDATE



CONSTRUCTION UPDATE





For more information



+971 4 248 3400



+971 52 858 1104



info@goldpillars.ae



www.goldpillars.ae